

The Magnifier

for Windows

**Area and Full Screen
Magnifier**

Version 1.50 Release 5

User's Guide

The Magnifier: for Windows; Area and Full Screen Magnifier; Version 1.50 Release 5; User's Guide

IMG Real World Press

179 Niblick Road #454
Paso Robles, CA 93446
1-800-889-0987 (US & Canada)
+1-818-701-1579
+1-818-936-0200 (fax)

Website: <http://www.imgpresents.com>

To report errors, please send a note to ts@imgpresents.com

IMG Real World Press is a division of Innovation Management Group, Inc.

The Magnifier, Version 1.50 Release 5, 9/17/2012

Copyright © 1997-2012 by Innovation Management Group, Inc.

Production/Editing/Composition/Indexing/Publishing: IMG Real World Press

Notice of Rights

All Rights Reserved. No part of this book may be reproduced or transmitted in any form by any means, electronic, mechanical, photocopying, recording, or otherwise, without the prior written permission of the publisher. For information on obtaining permission for reprints, excerpts, or other uses, please contact ts@imgpresents.com

Trademarks

My-T-Mouse[®], My-T-Pen[®], My-T-Touch[®] and My-T-Soft[®] are registered trademarks of Innovation Management Group, Inc.

Any other product name, service, or company identified within the book is used for informational or editorial purposes only, and with no intention of infringement of any trademark. No such use is intended to convey endorsement or other affiliation with this book.

Notice of liability

The information in this book is distributed on an "As is" basis, without warranty. While every precaution has been taken in the preparation of this book, IMG Real World Press shall not have any liability to any person or entity with respect to any loss or damage caused or alleged to be caused directly or indirectly by any information contained in this book or the product(s) described. The publisher takes no responsibility for any errors or omissions.

ISBN 978-0-557-88454-4

Table of Contents

Part I. Getting Started.....	xi
1. Quick Start	1
2. Getting Started	7
The Magnifier User's Guide	7
Using this Guide	9
What is The Magnifier?.....	11
Why do I need The Magnifier?...	14
Features.....	15
What You Need.....	17
Installing / Un-Installing The Magnifier.....	18
Starting The Magnifier	23
Licensing Information	24
License Manager	26
Standard Settings	37
Commonly Asked Questions	37
Customer Support.....	42
Product Catalog	45

Part II. Using The Magnifier	51
3. Common Configurations	53
The Magnifier Common Configurations Overview ..	53
The Magnifier Basic Operation Notes	53
The Magnifier Toolbar	57
The Magnifier Complete List of Shortcut Keys	62
The Magnifier Shortcut Keys by Function	81
The Magnifier Full Screen Operation - Common Configurations	86
The Magnifier Color Inversion Operation - Common Configurations	87
The Magnifier Return to Defaults - Common Configurations ...	89
The Magnifier tracks Mouse Cursor - Common	

Configurations.....	90
The Magnifier Starts with Windows - Common Configurations.....	92
4. Windowed Operation	95
The Magnifier Windowed Operation Overview	95
Magnification.....	96
Full Screen.....	102
The Magnifier Follows Cursor .	103
Invert Colors	105
Position	106
Set Position.....	109
Cursor Options.....	115
Advanced	119
Help	129
Exit & Save.....	131
5. Full Screen Operation	133
The Magnifier Full Screen Operation Overview	133
Magnification.....	136

Full Screen.....	142
Invert Colors	142
Cursor Options.....	143
Advanced	148
Full Screen Options	156
Help	159
Exit & Save.....	161
6. Magnifier Menu.....	163
The Magnifier Menu Overview	163
Magnifier Menu - Main Menu..	165
Magnifier Menu - Magnification Menu	168
Magnifier Menu - Position Menu 170	
Magnifier Menu - Set Position Menu	171
Magnifier Menu - Cursor Options Menu	173
Magnifier Menu - Advanced Menu 174	

Magnifier Menu - Full Screen	
Options Menu.....	176
Magnifier Menu - Help Menu...	177
Part III. The Magnifier Technical	
Documentation	178
7. Advanced User Notes.....	180
Advanced User Notes &	
Information	180
Final Release Notes	181
Important User Notes	182
Technical Notes	184
The Magnifier Files & File Notes	
& Installation Information	
184	
Installation Information ..	188
The Magnifier Initialization File	
Documentation	
(MAGNIFY.INI)	192
Alternate Magnification In Vista	
213	

Application Notes	216
Windows Developers	217
About this product	219
Customer Suggestions	220
Index.....	224

List of Tables

3-1. Keyboard Shortcut Quick Reference	62
--	----

Part I. Getting Started

General information about this guide, the product, installation, and getting started (how to get The Magnifier running).

Chapter 1 - Quick Start contains details on the fastest way to install & begin using The

Magnifier

Chapter 2 - Getting Started has more information about this guide, The Magnifier features, Installing / Un-Installing, Licensing Information, Standard Settings, using The Magnifier Setup, Commonly Asked Questions, and information about Customer Support.

Chapter 1. Quick Start

Install The Magnifier

There are various ways to obtain IMG software, including (but not limited to):

- Web based / Internet download from IMG's web site
(<http://www.imgpresents.com/demo.htm>)
- Shipped CD / DVD physical media - IMG Product Disc
- Download ISO image file and burn IMG Product Disc CD / DVD
- USB Flash Drive (pre-installed or installed from USB media web download)
- Single file install (from local network / internet / other media)
- IMG on-line account

Note: IMG Software is built by product and major version with minor releases. There is only 1 unique build, but can be packaged / delivered / obtained in various ways. When unlicensed, the software acts as a demonstration / evaluation copy, and operation will be limited in length or run-time or capabilities. Once licensed (typically via License Key and Serial Number, or OEM / Company-wide / Enterprise licensing), the software will operate with no limitations.

Recommendation: The quickest and easiest method for obtaining IMG software is to download the current version from IMG's web site (<http://www.imgpresents.com/demo.htm>). Download, then run the file to install. Test, review, play with, and verify the software meets your needs and requirements.

When ready to purchase, go to the IMG License Manager, and click on the "Purchase License Now" button. If working on a machine without internet access, use the Standard or MSI single file download, or use a Product Disc option. Separately, purchase the license for the product directly on the website - once you have your License Key and Serial Number, you can install and license the software.

The following outlines a standard retail Product Disc based install. For other options, refer to notes and details available at the source. In general, the approach is to install the software, then license the software. The Product Disc Installation Assistant provides an easy way to accomplish these two tasks.

- In Windows, insert the CD or DVD - the

AutoRun feature will load the Installation Assistant - you may Install a licensed product , Install other product demos, or view Release Information. **If you have a Certificate of Authenticity, enter your License Key, Serial Number, and Name to Install and automatically License.**

- If AutoRun is not enabled:
- In Windows, Click on the Start Button
- Select Run
- Select D:SETUP, or type D:SETUP (or E:SETUP if CD/DVD drive E:, etc.)
- Press (ENTER) or click on OK
- In Windows Vista, you may not have the Run Option - select Computer, your CD/DVD drive, and open Setup
- Answer the questions and follow the instructions on your screen

Note: You may also Un-Install The Magnifier by running SETUP.EXE After The Magnifier has been properly installed. (The Magnifier Setup will ask you if you wish to Un-Install.) This has been provided as a convenience to the user. It is recommended that you use the Control Panel | Add/Remove Programs Icon to remove The Magnifier.

Start The Magnifier

Click on the Start Button, and open the Start Menu.

Select (All) Programs, then Select The Magnifier. The Magnifier menu will have selections corresponding to the icons in the group. Select The Magnifier to begin operation.

The Magnifier will automatically run after install. You will see a window in the center of

your screen with the default settings. You can right-click on The Magnifier to open The Magnifier menu. You may also click on the small icon in the tray (near the clock) for The Magnifier menu. You can use the keyboard shortcut **Alt-K** to see the list of keyboard shortcuts and get access to The Magnifier help files. Refer to the on-line help, and the User's guide for features and capabilities of The Magnifier.

Chapter 2. Getting Started

The Magnifier User's Guide

Version 1.50 Release 5

9/17/2012

A Utility for Windows

Information in this document is subject to change without notice and does not represent a commitment on the part of Innovation Management Group, Inc. The software described in this document is furnished under a license agreement or nondisclosure agreement. The software and documentation may be used or copied only in accordance with the terms of

this agreement. It is against the law to copy the software on any medium except as specifically allowed in the license or nondisclosure agreement. The purchaser may be allowed to make a back-up copy. No part of this manual or guide may be reproduced or transmitted in any form or by any means, electronic or mechanical, including photocopying, recording, or information storage and retrieval systems, for any purpose other than the purchaser's personal use, without the express written permission of Innovation Management Group, Inc.

This manual and product represent over 15 years of on-going development, testing, and support. Licensed users of the software are the most important aspect of the entire process that brings this manual and product into existence. Please be respectful of all parties involved.

Trademarks:

Microsoft Windows is a trademark of Microsoft Corporation.

My-T-Mouse[®], My-T-Pen[®], My-T-Touch[®] and My-T-Soft[®] are registered trademarks of Innovation Management Group, Inc.

Copyrights

The Magnifier Copyright © 1997-2012 Innovation Management Group, Inc.

The Magnifier User's Guide Copyright © 1997-2012 Innovation Management Group, Inc.

All Rights Reserved. Software Subject to Restricted Rights.

Using this Guide

This guide is a comprehensive collection of

details, notes, and information about The Magnifier. Portions are incorporated within the product itself, and it is also available in various forms (e.g. printed, on-line, PDF, etc.).

Important User Information

This guide is for users who are familiar with Windows, its basic concepts, and how to operate within Windows. If you are not, the information you may need to fully utilize The Magnifier and this guide may be limited. You may wish to review Windows help, tutorials, and other available information on using and operating Windows before continuing using this guide.

Conventions used within this guide

Note: Notes and other additional information will be indicated in this way

Warning

Special and other important details to pay close attention to will appear this way

What is The Magnifier?

The Magnifier is an easy to operate utility that magnifies the screen area below the current position of the mouse cursor (pointer) within Windows. New features include the ability to track the text caret (text cursor), follow dialogs and keyboard focus, and the often requested full screen operation (with support for multiple monitors (if available)). Quick & easy keyboard shortcuts allow access to different

magnification factors; to toggle colors; to toggle visibility; to toggle full-screen vs. window mode operation; and to access many other features & capabilities. The Magnifier allows individuals to clearly see details that otherwise may be difficult to see due to screen sizing, differing resolutions, graphic detail, or vision impairment.

Note: The Magnifier started as a panel on IMG's My-T-Mouse[®], and became a stand-alone product in 1997. In 2007, to support new magnification interfaces available in Windows Vista, The Magnifier was updated to provide even more capabilities, and to incorporate user suggestions.

Intended uses: The Magnifier provides all types of useful tools and capabilities for

individuals with visual impairments, graphic artists, and general computer users who may need a quick & easy way to magnify some or all of their display. The whole design, intent, and result of the engineering decisions behind what The Magnifier is, and its purpose, has been focused on creating an affordable magnifier for everyone. For individuals with specific requirements, who need screen reading capability, or who find the limitations of this product problematic, then this product is probably not for you. There are numerous other screen magnification products available that may provide alternate, more advanced, or additional capabilities beyond what The Magnifier provides. Note that some of these products are significantly more expensive, and any comparison should be made in terms of utility and cost-basis value. When it comes to usability, affordability, and value, The Magnifier

provides an incredible solution that results in many satisfied customers.

Why do I need The Magnifier?

The Magnifier is easy and fun to use, provides full screen magnification, along with numerous other user-requested features. Just point, type, or move around with your keyboard and it automatically magnifies. If you spend a lot of time staring at the screen, want to operate farther from the screen, have any visual impairment, or want to relax while using your computer, The Magnifier provides everything you need. The Magnifier contains numerous user-requested options, has been enhanced to

provide simple & straightforward magnification capabilities, and includes simple, sophisticated, and advanced tools for all types of users. There is also a set of integration tools for developers.

Features

- Up to 40x Magnifier for ALL windows applications
- Full screen operation (supports multiple monitors)
- Resizable window(s) for complete flexibility.
- Up to 7 windowed Magnifiers can be running at the same time
- The Magnifier tracks mouse cursor and

tracks text caret while typing

- The Magnifier also can track dialogs and the keyboard focus through lists, menus, icons, and other selectable items
- 400 different Magnification settings 1x, 1.1x, 1.2x ... 39.9x, 40x
- The special Magnifier Menu is easy to read.
- Cursor location lines to find cursor
- Cursor Location Lines are sizeable, color is selectable, and can even animate
- Auto Position option to move away from cursor
- Lock position to magnify fixed screen location
- Lens View Mode
- Useful aid for visually impaired individuals

- Inverted colors option for high-contrast viewing
- Optional cursor display in magnified window
- Developer Tool Kit and Extensions
- Microsoft Windows 2000 / XP / Vista / 7 Compatible
- Keyboard Interface for managing and controlling The Magnifier
- End-user and Developer Support

What You Need

To run The Magnifier you need the following equipment (hardware requirements):

- IBM 80386 or higher or compatible

- 25 mb hard disk space available
- 128 mb memory or higher
- Windows 2000 / XP / Vista / 7
- VGA or SVGA recommended
- Any Windows supported pointing device

Installing / Un-Installing The Magnifier

There are various ways to obtain IMG software, including (but not limited to):

- Web based / Internet download from IMG's web site
(<http://www.imgpresents.com/demo.htm>)

- Shipped CD / DVD physical media - IMG Product Disc
- Download ISO image file and burn IMG Product Disc CD / DVD
- USB Flash Drive (pre-installed or installed from USB media web download)
- Single file install (from local network / internet / other media)
- IMG on-line account

Note: IMG Software is built by product and major version with minor releases. There is only 1 unique build, but can be packaged / delivered / obtained in various ways. When unlicensed, the software acts as a demonstration / evaluation copy, and operation will be limited in length or run-time or capabilities. Once licensed (typically via License Key and Serial Number, or OEM / Company-wide /

Enterprise licensing), the software will operate with no limitations.

Recommendation: The quickest and easiest method for obtaining IMG software is to download the current version from IMG's web site (<http://www.imgpresents.com/demo.htm>). Download, then run the file to install. Test, review, play with, and verify the software meets your needs and requirements. When ready to purchase, go to the IMG License Manager, and click on the "Purchase License Now" button. If working on a machine without internet access, use the Standard or MSI single file download, or use a Product Disc option. Separately, purchase the license for the product directly on the website - once you have your License Key and Serial Number, you can install and license the software.

The following outlines a standard retail Product Disc based install. For other options, refer to notes and details available at the source. In general, the approach is to install the software, then license the software. The Product Disc Installation Assistant provides an easy way to accomplish these two tasks.

- In Windows, insert the CD or DVD - the AutoRun feature will load the Installation Assistant - you may Install a licensed product , Install other product demos, or view Release Information. **If you have a Certificate of Authenticity, enter your License Key, Serial Number, and Name to Install and automatically License.**
- If AutoRun is not enabled:
- In Windows, Click on the Start Button

- Select Run
- Select D:SETUP, or type D:SETUP (or E:SETUP if CD / DVD drive E:, etc.)
- Press (ENTER) or click on OK
- In Windows Vista, you may not have the Run Option - select Computer, your CD/DVD drive, and open Setup
- Answer the questions and follow the instructions on your screen

Note: You may also Un-Install The Magnifier by running SETUP.EXE After The Magnifier has been properly installed. (The Magnifier Setup will ask you if you wish to Un-Install.) This has been provided as a convenience to the user. It is recommended that you use the Control Panel | Add/Remove Programs Icon to remove The Magnifier.

Starting The Magnifier

Click on the Start Button, and open the Start Menu. Select (All) Programs, then Select The Magnifier. The Magnifier menu will have selections corresponding to the icons in the group. Select The Magnifier to begin operation.

The following icons will also be available in The Magnifier group:

The Magnifier - runs The Magnifier

The Magnifier Help - opens The Magnifier Help (opens this document)

Licensing Information - Displays current license status of The Magnifier, allows instant licensing

Refer to The Magnifier Basic Operation Notes for a quick overview of The Magnifier. You can also use the keyboard shortcut **Alt-K** to see a list of available keyboard shortcuts for

controlling The Magnifier.

Licensing Information

The Magnifier uses the IMG License Manager to manage the licensed use of this product. If unlicensed, the product will run as demo (i.e. a demonstration version). In the demo (unlicensed) mode, The Magnifier will run for about an hour, and then exit, displaying the license manager (announcing that it is unlicensed). You may restart The Magnifier up to 100 times (the demonstration period limit). After the demonstration period is over, The Magnifier will not operate unless it is licensed. For extended evaluation and testing purposes, please contact IMG Customer Service for an evaluation license. Once licensed, the operation will not be limited in any way.

The most common methods of licensing are electronic (web/e-mail based) and by certificate (Certificate of Authenticity). In both cases, there will be a registered serial number, and a license key made available once a license has been purchased - these need to be entered into the IMG License Manager to activate a valid license. For further details, refer to the IMG License Manager. There is also USB storage device licensing, so The Magnifier can be run from the USB device, simply by inserting the licensed device into any system.

Note: There are numerous license schemes (including OEM, site, & enterprise licenses) available to meet the needs of all our customers. If you have any licensing questions, please contact Innovation Management Group, Inc. directly.

License Manager

In order to License The Magnifier, the correct License Key and Serial Number must be entered into the IMG License Manager, along with some text for the Customer (and optional Company) text areas. The License Key and Serial Number can be found on the Certificate of Authenticity, or in the Software Unlock Codes e-mail.

The Magnifier License

Manager - Authentication

IMG License Manager - Authentication

— License Information - Version 1.50.24242 —

This product is locked in Demo mode. To unlock, register, and license this product, a registered Serial #, License Key and Customer Name must be entered. Please enter the information from your Certificate of Authenticity. To purchase a License, click on the Purchase License Now button (Internet connection required).

Information to provide with Payment

System ID: G150-1AD5-A5F3-A022

The System ID is required for proper licensing! It is important that the System ID be obtained from the already installed software. Click on Purchase License Now (above) to use this System ID.

Enter Unlock Codes —
(Sent after payment approved)

License Key:

Serial No.:

Customer:

Company:

Contacting Innovation Management Group, Inc. & License Information

World Wide Web: <http://www.imgpresents.com/order.htm>

E-mail: order@imgpresents.com

USA & Canada (Toll Free): 1-800-889-0987

The License Key and Serial No. entries are a matched pair, and will work together to unlock the software. The Customer entry is required (i.e. some text must be entered in the Customer text area), but is not part of the license unlock process. The Company text area is optional, and will be shown as the Source when the

product is licensed.

To quickly and easily license the software (on a system that has internet access), simply click on the "Purchase License Now" button. Once connected to IMG's website, you will be asked to enter billing information and payment information. Once paid, your order will be processed, and you will receive a confirmation e-mail and a separate e-mail with license information. Once the order is fully processed, you can then click the "Retrieve Purchased License" button to automatically license your system.

System ID Note: The System ID is used to accurately match the Product and Version you wish to license with the License Information provided. If the system you wish to License does not have Internet Access, you can use the Copy System ID to Clipboard to accurately copy

the System ID to the clipboard (which can be saved in a text file or other document and moved to a system that does have Internet Access).

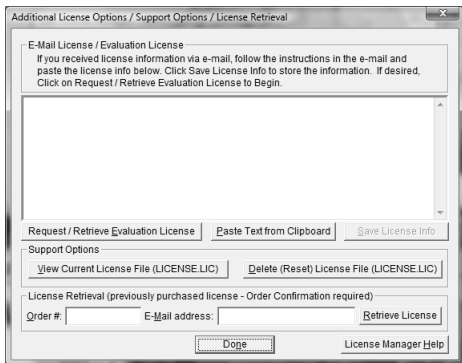
Note: The "Retrieve Purchased License" uses a unique identifier to automatically license your system (which is only sent if the "Purchase License Now" is used). If you try this on a different system, or after a system update or re-install (or after a change to this unique ID), the software will not license automatically. You will either need to enter the License Key and Serial Number, or go into Additional License Options (see below) and use your Order Confirmation Number and Order E-mail to retrieve the license.

Important Note: Be sure to save and/or print your Order Confirmation number (with Order E-mail), along with your License Key and Serial Number in case you need to re-license the software in the future (Operating System Re-install, hard disk reformat, new system, etc.)

Certificate of Authenticity Note: For Electronic Licenses, and Certificate of Authenticity can be retrieved on IMG's website:

<https://www.imgpresents.com/orders/account>
This requires a valid License Key and Serial Number. Once entered, you may view a PDF of the Certificate, or download the Certificate of Authenticity PDF file (for printing or saving).

The Magnifier License Manager - Additional License Options



The Additional License Options section has tools and options to Enter or Paste Evaluation or Other License Information; Request and Retrieve Evaluation Licenses; Support Options

to View and Delete (Reset) the License file; and a mechanism to retrieve a Purchased License by entering the Order Confirmation Number and the Order E-mail address.

Often, interested parties want to review or test the software without the demonstration license limitations, and to accommodate this, IMG makes available Evaluation Licenses. These Evaluation Licenses are fully functional licenses, but with a date limit (when the evaluation date has passed, the software will return back to the Unlicensed, Demonstration mode).

Evaluation Licenses may be requested at the Product Download pages on the website, or by using the Request / Retrieve Evaluation License button here. Note that all Evaluation License requests are reviewed, and Evaluation Licenses must be created by IMG personnel (generation is not automated).

An Evaluation License sent via e-mail contains a block of text that has the license details for the License Manager. When sent via e-mail, the text can be copied and subsequently pasted into the text area here (Paste Text from Clipboard), then saved to enable (set) the License Information (Save License Info).

Alternatively, if an Evaluation License is Requested, then after processing, it may be automatically Retrieved directly by clicking the Request / Retrieve Evaluation License button. Please refer to any additional information provided by the messages shown when using this approach.

The View Current License File (LICENSE.LIC) button will load the file LICENSE.LIC from the installation folder. This file contains the actual license information for the product, or the license information used to validate a License Key and Serial Number.

Note: Because an Evaluation License uses this same file, the Delete (Reset) option should be used if Licensing the product after using an Evaluation License.

The Delete (Reset) License File (LICENSE.LIC) will remove the existing LICENSE.LIC, then copy the file LICENSE.ORG to LICENSE.LIC (both in the installation folder). The file LICENSE.ORG is the "as shipped" license file, and should be the License File when using a License Key and Serial Number to license the software.

Note: For License Purposes, using the Support Option to Delete (Reset) the License File is essentially the same as un-installing, then re-installing the software. Because this option is quicker and simpler, it is the preferred approach to

resolve any license issues. Note that manually copying the file LICENSE.ORG to LICENSE.LIC (in the installation folder) performs the same operation as this option.

The License Retrieval Option will retrieve License Information from IMG's Website for electronically purchased licenses. The Order Confirmation Number and Order E-mail is required (which appear on the Order Confirmation page provided after successfully placing an on-line order, and are provided separately via an Order Confirmation E-mail).

Note: For Retrieved Licenses (via Retrieve Purchased License, and via the Retrieve License Support Option), License Key and Serial Number information is processed exactly as if this information was directly

entered in the Authentication area. Therefore, all issues that may affect licensing also apply to these automated options (e.g. License File status, User permissions, etc.)

The Magnifier License Manager - Licensed Display



When properly Licensed, a screen similar to this will show the License Information for the product. The display of this indicates that the software is Licensed.

Note: Evaluation licenses also show this screen during the days that the Evaluation License is valid.

Standard Settings

Settings in the standard configuration

The Magnifier starts in the window mode of operation in the default size and position. Refer to the next chapter for Common Configurations and how to set them up.

Commonly Asked Questions

Compatibility

1. Does The Magnifier work with all Windows Applications?

Yes.

Display

2. The Magnifier covers too much of my Window. What can I do?

Resize and/or reconfigure The Magnifier. Enable the Auto-Position option. Switch to the Full Screen mode of operation. Work with Developer's Kit to allow on-demand display.

The Magnifier Operation

3. Can The Magnifier do full screen magnification?

Yes. You can use the **Alt-Z** keyboard shortcut to toggle between the Full Screen mode of

operation and the Windowed mode.

4. Can I see the complete list shortcut keys?

Yes, use the keyboard shortcut **Alt-K** to open the help that shows the Complete List of Shortcut Keys.

5. How do I view the Cursor in the Magnifier?

The Magnifier Cursor indicator is selectable in menu, or you can use the keyboard shortcut **Alt-C** to toggle the display of the cursor within The Magnifier window.

6. In Full Screen mode, why does the cursor appear twice (different sizes)?

This is a result of the design of The Magnifier. The Full Screen mode synchronizes the magnified window relative to the underlying display, and the system's display of the cursor is unmodified. You can toggle the display of

the magnified cursor (e.g. from the menu, or using **Alt-C**). For presentations or other uses, you can also toggle the display of the system mouse cursor using **Alt-G**. For best results, you may wish to display a magnified cursor theme (available in Mouse Properties | Pointers) and disable the magnified cursor display. Systems with higher quality display subsystems (video adapter/video memory/monitor) may reduce the separation between the actual cursor and the magnified cursor display.

7. Why does magnification point jump around so much?

This is a result of the 3 events that can position the magnification point, the Mouse Cursor, the Text Caret, and the Keyboard Focus. The Text Caret and Dialogs & Keyboard Focus options are available from the Advanced Menu. You can toggle the Text and Keyboard tracking On and Off using **Alt-J**. Depending on these

settings and your actions within Windows, the magnification point will adjust and track these events, which will override the normal mouse cursor magnification point. You can refer to the Advanced Notes for additional information.

System

8. How Much Memory does The Magnifier use while running?

This depends on your screen display colors, Windows version, and the current configuration. Normal operation requires less than 100K RAM.

9. Does The Magnifier require any special drivers?

No. The Magnifier works with all standard Windows drivers. Unlike other magnification products that must install at a very low level, The Magnifier was designed to work as a standard windows application, and will operate

seamlessly with any Windows system. Because the product relies almost exclusively on the display subsystem, the best, most up-to-date drivers for your video adapter is highly recommended. Using a higher quality video adapter (with larger amounts of high-speed video RAM) in your system will provide smoother & cleaner operation.

Customer Support

The Magnifier Software is backed by a support staff trained to provide you with fast, courteous service. Over the years, IMG has astounded individuals at the quality of its software and its support. So that we can continue to focus our resources on development and providing high-quality products & support, we do appreciate your assistance in reviewing the

help, manual, and support information available at our website to see if the problem or question has already been addressed. However, if you need assistance beyond what the manual, tutorial, help files, and on-line support database provide, please contact IMG Customer Service:

Innovation Management Group, Inc.

Customer Service

179 Niblick Road #454

Paso Robles, CA 93446

USA

1-800-889-0987 (US & Canada)

+1-818-701-1579

+1-818-936-0200 (fax)

<cs

[http://www](http://www<imgpresents.com)

To open a Technical Support case and create a support ticket, please refer to <https://www.imgpresents.com/orders/support/tech>

Please provide, or have the following information ready when you ask for assistance:

- The Magnifier version number, update level.
- Registered serial number (or if running demo)
- Make and Model of your computer.
- Windows version number, any Service Packs or major updates.
- A description of the problem.
- If possible, a list of the steps required to recreate the problem.
- If you have seen an error code, record and report the number.

- Additional information may be required, such as monitor type, type of pointing device, amount of RAM in your system, other software running (anti-virus, spyware, virtual machine, etc.).

Product Catalog

**Innovation Management Group, Inc.'s
Products**

Commercial Division Products...

**Indestructible Keyboards & Indispensable
Utilities!**

My-T-Soft® Build-A-Board

The Ultimate Tool for creating and modifying

On-Screen Keyboards, buttons, and Panels.
My-T-Soft Family, plus Cross-Platform
Support

My-T-Pen[®] for Windows

On-Screen Keyboards & Utilities for Pen
Based Systems

My-T-Touch[®] for Windows

On-Screen Keyboards & Utilities for
Touchscreens

My-T-Soft[®] for Windows

On-Screen Keyboards & Utilities for any
pointing device

My-T-Soft[®] TS for Terminal Services

On-Screen Keyboards for Terminal Server /
Terminal Services

TouchRight Utilities

Right Click Access for Pens & Touchscreens

Assistive Technology Division Products...

Enabling Tools for Special Needs

AT Accessibility Suite

IMG's Assistive Technology Software with site license options

Joystick-To-Mouse

The Software That Lets You Run Windows With A Joystick!

My-T-Mouse[®]

The Software That Makes Your Mouse a Mouse That Types! Indispensable & Utilities for any Mouse or Trackball

OnScreen

Special Features for disabled & impaired users
Word Prediction / Word Completion / Window Control / Scanning

OnScreen with CrossScanner

Complete control of Windows from a single switch! Support for Keyboard, Mouse, Joystick interfaces

SmartClick

Operate Windows without the need to Press/Click a Button

The Magnifier

Area and Full Screen Magnifier, Cursor Locator, Visual Aids

WordComplete

Word Completion, adaptive word prediction, Word List Management, etc. Type Better, Type Less - we do the rest!

For further information...

Contact your Local Software Dealer

or

Innovation Management Group, Inc.

179 Niblick Road #454

Paso Robles, CA 93446

USA

1-800-889-0987 (US & Canada)

+1-818-701-1579

+1-818-936-0200 (fax)

<cs

<http://www.imgpresents.com>

<http://www.my-t-mouse.com>

<http://www.my-t-pen.com>

<http://www.my-t-soft.com>

<http://www.my-t-touch.com>

<http://www.onscreen-keyboard.com>

<http://www.build-a-board.com>

<http://www.joystick-to-mouse.com>

<http://www.themagnifier.us>

For International Contacts, please see Web Site...

My-T-Mouse[®], My-T-Pen[®], My-T-Touch[®] and My-T-Soft[®] are registered trademarks of Innovation Management Group, Inc.

Part II. Using The Magnifier

Description of how to operate and configure The Magnifier.

**Description of how to operate and configure
The Magnifier.**

Chapter 3 - Common Configurations

contains basic operation notes, and details on commonly used configurations & how to quickly setup these usage scenarios.

Chapter 4 - Windowed Operation contains general operation information when operating with one or more magnification windows.

Chapter 5 - Full Screen Operation contains general operation information when operating in the full screen mode

Chapter 6 - Magnifier Menu covers the alternate Magnifier Menu

Chapter 3. Common Configurations

The Magnifier Common Configurations Overview

This section begins by covering basic operation options of The Magnifier, and then outlines basic configurations and how to configure the product (from startup defaults) to get there.

The Magnifier Basic Operation Notes

When running The Magnifier, there are 2 main

Chapter 3. Common Configurations

modes of operation - as a window (with up to 7 magnifiers running concurrently), or in full screen mode. Because of the differences in these 2 modes of operation, some features are not available, or do not apply depending on the current mode in use. For detailed information, you can refer to the chapters that cover these 2 modes in detail (Windowed and Full Screen).

Whenever The Magnifier is running, there will be a small magnifying glass icon in the system tray (next to the clock in the taskbar). You can always access The Magnifier menu by left or right clicking on this small icon.

When The Magnifier is in the window mode, double-clicking on The Magnifier window will switch to the Full Screen mode of operation. When the Full Screen mode of operation is in use, only 1 instance of The Magnifier will be running. If there is more than one instance of The Magnifier running prior to the switch to

Chapter 3. Common Configurations

Full Screen mode, all but one will be closed before the switch to the Full Screen mode occurs.

The best way to read using The Magnifier is to use the Arrow keys as panning tools. For left-to-right reading material, position your mouse cursor at the left-most part of the text, then let go of the mouse, and use the Ctrl-Right Arrow to pan to the right. Once you reach the end of the page (and need to go back to the left) let go of the keyboard (this will snap you back to the beginning). When you need to go down, use the Alt-Down Arrow to move the mouse cursor down (or simply reposition the mouse as appropriate).

Note: Depending on the magnification that works best for you, and other applications in use, enabling the MouseKeys accessibility in Windows may be beneficial (MouseKeys allows the Numeric keypad to

Chapter 3. Common Configurations

move the mouse cursor). For further details on MouseKeys, refer to the Accessibility options in Windows (Ease of Access in Windows Vista).

By default, The Magnifier tracks the text caret (text cursor), dialogs, and keyboard focus (menus, icons, selections, etc.), along with tracking the mouse cursor. When tracking the keyboard, the mouse tracking is disabled - to re-enable the mouse tracking, the mouse needs to move away from its current position. The keyboard options can be disabled within the Advanced Menu.

The Magnifier uses a standard menu for all available options (with other capabilities available through keyboard shortcuts). As a special feature within The Magnifier, there is also a Magnifier Menu that uses the entire screen for its display and uses large type. This

large type menu has the same options as the standard menu, but may be preferable to some individuals. This is selectable in the Advanced Menu.

The Magnifier's basic operation is straightforward, and you can become proficient by reviewing this chapter alone, but there are numerous enhancements and advanced features available. Please refer to the following chapters, Advanced Notes, and the Developer's Kit utilities for even more details on The Magnifier capabilities.

The Magnifier Toolbar

The Magnifier Toolbar is a simple and straightforward visual tool bar that allows the user to perform basic functions, without requiring any additional knowledge of the

Chapter 3. Common Configurations

keyboard shortcuts, or how to access the menu. It is by default On, but can be disabled via the Advanced Menu.



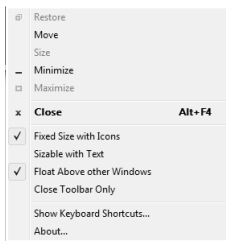
The Magnifier Toolbar operation just requires a mouse click on the buttons displayed to perform the selected function. You can also use the keyboard to interface with it - use Alt-Tab to select the toolbar, then use the arrow keys to select buttons. Use the Space Bar to select a button (Note: [Enter] will not select a button). The buttons will change based on the current status or The Magnifier (to reflect available options). The available options are as follows:

- **Show / Hide** If The Magnifier is visible, hide it. If hidden, show it.
- **Full Screen / Window** Toggles between the

Chapter 3. Common Configurations

Full Screen mode and the Windowed mode of operation.

- **2X / 3X** If greater than 2X, go to 2X magnification. If at 2X magnification, go to 3X magnification.
- **Increase Magnification 1X** Increase the magnification up to 9X magnification.
- **Decrease Magnification 1X** decrease the current magnification down to 2X magnification
- **Close** Close the Toolbar and The Magnifier.



The Magnifier Toolbar has a system menu for basic Window functions such as move, minimize, etc., and adds additional options for several features.

- **Fixed Size with Icons** This is the default display, showing a row of icons indicating the operation available.
- **Sizable with Text** This makes the window sizable, and shows text that will attempt to fit into the buttons as best it can - the Toolbar window can be made larger or smaller as desired.
- **Float Above other Windows** This keeps the window Topmost, which will place it above most windows in the system.
- **Close Toolbar Only** This will close the Toolbar for the lifetime of The Magnifier. The next time The Magnifier is run, the

Chapter 3. Common Configurations

Toolbar will also be shown, unless disabled from the Advanced Menu in The Magnifier.

- **Show Keyboard Shortcuts...** This opens the Keyboard Shortcut List from the help file.
- **About...** A message showing information about The Magnifier Toolbar.



This is the Toolbar with the text mode enabled - in this mode, the window may be sized as desired. Certain sizes / configurations will

display the text better (more readable) than others.

The Magnifier Complete List of Shortcut Keys

Table 3-1. Keyboard Shortcut Quick Reference

Mouse	Magnification	Letters	Arrows
Left Double-Click Go to Full Screen	Alt-1 1X magnification	Alt-A Alternate (Vista Only*[1])	Alt-Up Arrow Cursor Up

Chapter 3. Common Configurations

Left Click & Hold Drag lock	Alt-2 2X magnification	Alt-C Show / Hide Cursor	Alt-Down Arrow Cursor Down
Left Click Release drag lock	Alt-3 3X magnification	Alt-D Default size	Alt-Left Arrow Cursor Left
Right Click Open Menu	Alt-4 4X magnification	Alt-G Presentation Mode	Alt-Right Arrow Cursor Right
	Alt-5 5X magnification	Alt-I Invert Colors	Ctrl-Up Arrow Pan Up

Chapter 3. Common Configurations

Edit Keys	Alt-6 6X magnifi- cation	Alt-J Toggle Text tracking	Ctrl- Down Arrow Pan Down
Alt- Home Window Left	Alt-7 7X magnifi- cation	Alt-K This List (Shortcut keys)	Ctrl-Left Arrow Pan Left
Alt- Delete Window Left	Alt-8 8X magnifi- cation	Alt-L Lock Position	Ctrl- Right Arrow Pan Right
Alt-End Window Right	Alt-9 9X magnifi- cation	Alt-M Magnifi- cation dialog	Up Arrow Top border up

Chapter 3. Common Configurations

Alt-PgUp Window Up	Alt--() Decrease magnifi- cation -0.1	Alt-N Cursor Lines	Down Arrow Bottom border down
Alt-PgDn Window Down	Alt=+(+) Increase magnifi- cation +0.1	Alt-O Follows cursor toggle	Left Arrow Left border left
	Alt- ,(comma) Decrease magnifi- cation -0.1	Alt-Q Exit & Save	Right Arrow Right border right

Chapter 3. Common Configurations

	Alt- .(period) Increase magnifi- cation +0.1	Alt-R Lens View Toggle	Shift-Up Arrow Bottom border up
		Alt-S Show & Hide toggle	Shift- Down Arrow Top border down
		Alt-T Trans- parency	Shift- Left Arrow Right border left

		Alt-V Full Display toggle	Shift- Right Arrow Left border right
		Alt-Z Full Screen toggle	

The Most Useful Keyboard shortcuts, along with Other Useful Keyboard shortcuts is followed by the Complete List of Keyboard shortcuts. For a list categorized by function, see Shortcut Keys by Function.

IMPORTANT NOTE: For consistency, throughout this document, all shortcut keys will be represented as their default

setting, e.g. Alt-[Key]. You can change the **Alt** key modifier to **Alt-Shift** or **Ctrl-Shift** in the Advanced Menu | Keyboard Shortcuts... This affects all Alt keyboard shortcuts listed below EXCEPT the Alt+Arrow key panning functions.

Useful Mouse Operations

- **Left Double-Click** In the window mode of operation, this changes to the Full Screen mode of operation.
- **Left Click & Hold** In the window mode of operation, this engages a drag-lock (mouse cursor will change when in use), which allows you to drag The Magnifier around without holding down a mouse button. To release, Left Click again.
- **Right Click** In the window mode of

operation, this will open The Magnifier menu (based on current menu setting).

Most Useful Keyboard shortcuts

- **Alt-Z** Full Screen (Zoom) / Window toggle
- **Alt-S** Show & Hide The Magnifier window (toggle)
- **Alt-1, Alt-2, ..., Alt-9** 1X, 2X, thru 9X magnification
- **Alt=**(+) Increase magnification +0.1
- **Alt-**(_) Decrease magnification -0.1
- **Alt,**(comma) Decrease magnification -0.1
- **Alt.**(period) Increase magnification +0.1
- **Alt-K** Show this list of Keyboard Shortcuts

Other Useful Keyboard shortcuts

- **Alt-C** Show / Hide Magnified Cursor

- **Alt-D** Return to default size (window mode only)
- **Alt-G** Presentation Mode (the Go away cursor mode - hides mouse cursor)
- **Alt-I** Invert Colors shown in The Magnifier
- **Alt-J** Toggle Text tracking (both track text caret, dialogs on or off)
- **Alt-N** Show / Hide Cursor Lines
- **Alt-T** Show Transparency dialog
- **Alt-M** Show Magnification dialog
- **Alt-O** The Magnifier follows cursor toggle (window mode only)

Complete List of Keyboard Shortcuts

Keyboard Keys

- **Alt-1** 1X magnification
- **Alt-2** 2X magnification

Chapter 3. Common Configurations

- **Alt-3** 3X magnification
- **Alt-4** 4X magnification
- **Alt-5** 5X magnification
- **Alt-6** 6X magnification
- **Alt-7** 7X magnification
- **Alt-8** 8X magnification
- **Alt-9** 9X magnification
- **Alt=**(+) Increase magnification +0.1
- **Alt-**(_) Decrease magnification -0.1
- **Alt-**(comma) Decrease magnification -0.1
- **Alt.**(period) Increase magnification +0.1
- **Alt-A** Alternate Magnifier (Vista Only - see Note 1 below)
- **Alt-C** Show / Hide Magnified Cursor
- **Alt-D** Return to default size (window mode only)

Chapter 3. Common Configurations

- **Alt-G** Presentation Mode (the Go away cursor mode - hides mouse cursor)
- **Alt-I** Invert Colors shown in The Magnifier
- **Alt-J** Toggle Text tracking (both track text caret, dialogs on or off)
- **Alt-K** Show this list of Keyboard Shortcuts
- **Alt-L** Lock Magnified Position
- **Alt-M** Show Magnification dialog
- **Alt-N** Show / Hide Cursor Lines
- **Alt-O** The Magnifier follows cursor toggle (window mode only)
- **Alt-Q** Close (Exit) The Magnifier
- **Alt-R** Lens View Mode (Round Magnifier) Toggle
- **Alt-S** Show & Hide The Magnifier window (toggle)
- **Alt-T** Show Transparency dialog

Chapter 3. Common Configurations

- **Alt-V** Full Display (entire Virtual desktop) toggle
- **Alt-Z** Full Screen (Zoom) / Window toggle

Edit Keys

- **Alt-Home** Move Window Left
- **Alt-Delete** Move Window Left
- **Alt-End** Move Window Right
- **Alt-PgUp** Move Window Up
- **Alt-PgDn** Move Window Down

Arrow Keys

Note: The Arrow Key combinations remain the same whether the Alt, Alt-Shift, or Ctrl-Shift modifier is in use (i.e. Alt-Up Arrow will always perform the same operation regardless of which modifier combination is in use).

Note: The Alt-Arrow keys moves the mouse cursor to change the magnification point. This is for fine-tuning or zeroing in on a specific point, especially when the magnification is rather large. Also note there is an accessibility feature to control the mouse cursor from the Numeric keypad (MouseKeys). Also note that these Alt keys are not controlled by the Keyboard Shortcuts setting in The Magnifier

Note: The Alt-Left Arrow and Alt-Right Arrow keys are shortcuts to move Forward and Backward in popular web browsers, and this will cause conflicts using these from The Magnifier (since the page you are viewing will change).

Chapter 3. Common Configurations

- **Alt-Up Arrow** Move Cursor Up (scroll magnification)
- **Alt-Down Arrow** Move Cursor Down (scroll magnification)
- **Alt-Left Arrow** Move Cursor Left (scroll magnification)
- **Alt-Right Arrow** Move Cursor Right (scroll magnification)

Note: The Ctrl-Arrow keys change the magnification point internally, so when the Control key is released, the magnification point will return to the mouse cursor position (snaps back). This is an alternate approach to pan or scroll the magnification without affecting anything else in the system but what is shown in The Magnifier's display.

- **Ctrl-Up Arrow** Move Magnification point Up (temporarily scroll magnification)
- **Ctrl-Down Arrow** Move Magnification point Down (temporarily scroll magnification)
- **Ctrl-Left Arrow** Move Magnification point Left (temporarily scroll magnification)
- **Ctrl-Right Arrow** Move Magnification point Right (temporarily scroll magnification)

Note: The Arrow keys can size & position The Magnifier window. You must click on and give the keyboard focus to The Magnifier for these keys to operate. These only work in the Window mode of operation.

Chapter 3. Common Configurations

- **Up Arrow** Move top border up
- **Down Arrow** Move bottom border down
- **Left Arrow** Move left border left
- **Right Arrow** Move right border right

- **Shift-Up Arrow** Move bottom border up
- **Shift-Down Arrow** Move top border down
- **Shift-Left Arrow** Move right border left
- **Shift-Right Arrow** Move left border right

Note 1 (Vista Only): In Windows Vista, Microsoft has created a magnification interface that creates a useful mechanism for doing the screen magnification while in Vista. Depending on your system configuration, video adapter, video adapter driver, monitor resolution, and display settings, this magnification may not render. In all cases, it is recommended you update

your system or drivers to enable Vista to work correctly. When the magnification subsystem is not operating in Vista, The Magnifier's background window will be visible, and text will be displayed outlining the option of using an alternate magnification scheme (accessible using Alt-A). This is provided only as an alternate, failsafe type magnification option for users of The Magnifier. Refer to Advanced Notes regarding the Alternate Magnification in Vista.

Note 2 - Keyboard Focus & The Magnifier: Because The Magnifier is a user-interface enhancement, and operates alongside the user's normal use of basic programs and applications, the user will most often have the keyboard focus everywhere but The Magnifier. Because customers asked for a way to control &

Chapter 3. Common Configurations

modify The Magnifier while working within Windows, The Magnifier must monitor the keyboard independently of the normal way programs work within Windows (i.e. where only the program with keystroke focus sees/reacts to the keyboard). This all works wonderfully, and makes everyone happy, up until there is a conflict between a keystroke combination The Magnifier reacts to, and when that particular keystroke combination is used within the program the user is currently working with. In some cases, the problem may only be a minor annoyance - at other times, it may be a serious impediment. If there is a serious conflict, then selecting one of alternate shortcut modifiers is the best option (and will reduce the possibility of a conflict). You can choose from the Alt key, the Alt+Shift keys, or Control+Shift key modifiers.

Note 3 - Operation Notes: When multiple magnifiers are running, some of the keyboard shortcuts will affect ALL magnifiers running. In some cases, using the menu options when multiple magnifiers are running may be more effective (e.g. positioning, setting features, etc.).

Note 4 - Advanced Notes: The keyboard shortcuts are implemented in 2 distinct ways. 1 approach uses 3 sets of Keyboard Accelerators (for Alt, Alt-Shift, and Ctrl-Shift), that are used when The Magnifier has the keyboard focus. The other is a keyboard monitoring approach (using the GetAsyncKeyState Windows API) for the combination key and the shortcut key. The sizing options using the arrow keys (and shift-arrow keys) are only implemented as keyboard accelerators (requiring focus to be on The Magnifier).

The Magnifier Shortcut Keys by Function

This lists the keyboard shortcuts by function in various categories. For the complete list, with operation notes, see the Complete List of Keyboard Shortcuts.

Keyboard Shortcuts by Function Category

Magnification Factor control

- **Alt-1** 1X magnification
- **Alt-2** 2X magnification
- **Alt-3** 3X magnification
- **Alt-4** 4X magnification

Chapter 3. Common Configurations

- **Alt-5** 5X magnification
- **Alt-6** 6X magnification
- **Alt-7** 7X magnification
- **Alt-8** 8X magnification
- **Alt-9** 9X magnification
- **Alt-=(+)** Increase magnification +0.1
- **Alt--(_)** Decrease magnification -0.1
- **Alt-,(comma)** Decrease magnification -0.1
- **Alt.,(period)** Increase magnification +0.1
- **Alt-M** Show Magnification dialog

Important Display Options

- **Alt-C** Show / Hide Magnified Cursor
- **Alt-D** Return to default size (window mode only)
- **Alt-I** Invert Colors shown in The Magnifier

Chapter 3. Common Configurations

- **Alt-R** Lens View Mode (Round Magnifier) Toggle
 - **Alt-S** Show & Hide The Magnifier window (toggle)
 - **Alt-V** Full Display (entire Virtual desktop) toggle
 - **Alt-Z** Full Screen (Zoom) / Window toggle
- Special Display Options

- **Alt-G** Presentation Mode (Go away cursor - hides mouse cursor temporarily)
- **Alt-L** Lock Magnified Position
- **Alt-N** Show / Hide Cursor Lines
- **Alt-O** The Magnifier follows cursor toggle (window mode only)
- **Alt-T** Show Transparency dialog

Move / Size The Magnifier in Window Mode

Chapter 3. Common Configurations

- **Alt-Home** Move Window Left
 - **Alt-Delete** Move Window Left
 - **Alt-End** Move Window Right
 - **Alt-PgUp** Move Window Up
 - **Alt-PgDn** Move Window Down
 - **Up Arrow** Move top border up
 - **Down Arrow** Move bottom border down
 - **Left Arrow** Move left border left
 - **Right Arrow** Move right border right
 - **Shift-Up Arrow** Move bottom border up
 - **Shift-Down Arrow** Move top border down
 - **Shift-Left Arrow** Move right border left
 - **Shift-Right Arrow** Move left border right
- Control Magnification Point

Chapter 3. Common Configurations

- **Alt-Up Arrow** Move Cursor Up (scroll magnification)
- **Alt-Down Arrow** Move Cursor Down (scroll magnification)
- **Alt-Left Arrow** Move Cursor Left (scroll magnification)
- **Alt-Right Arrow** Move Cursor Right (scroll magnification)
- **Ctrl-Up Arrow** Move Magnification point Up (temporarily scroll magnification)
- **Ctrl-Down Arrow** Move Magnification point Down (temporarily scroll magnification)
- **Ctrl-Left Arrow** Move Magnification point Left (temporarily scroll magnification)
- **Ctrl-Right Arrow** Move Magnification point Right (temporarily scroll magnification)

Miscellaneous Options

- **Alt-A** Alternate Magnifier (Vista Only - see Note 1 (Complete List))
- **Alt-J** Toggle Text tracking
- **Alt-K** Show this list of Keyboard Shortcuts
- **Alt-Q** Close (Exit) The Magnifier

The Magnifier Full Screen Operation - Common Configurations

Alt-Z Full Screen (Zoom) / Window toggle

Without a doubt, the most common question about The Magnifier is: "Can it operate as a Full Screen magnifier?" Prior to the 1.50

Chapter 3. Common Configurations

Release, this capability was not present. Now we are pleased to offer an affordable, simple to use, powerful Full Screen magnifier!

After Installation, when you start The Magnifier, the default operation is an area magnifier, displayed in a window, centered on your screen. To quickly & easily turn on (or off) the Full Screen magnification, use **Alt-Z**

Shortcut Keys: For consistency, throughout this document, all shortcut keys will be represented as their default setting, e.g. Alt-[Key]. Please note that there are 3 selectable keystroke combinations available for all these keys - Alt-[Key], Alt-Shift-[Key], and Ctrl-Shift-[Key] (this is configurable in the Advanced menu). See the Complete List of Shortcut Keys for more information.

The Magnifier Color Inversion Operation - Common Configurations

Some people find the color inversion option helpful and it makes reading easier. To turn The Magnifier into a quick color inversion toggle tool, configure it as follows:

After Installation, when you start The Magnifier, the default operation is an area magnifier, displayed in a window, centered on your screen. Use **Alt-Z** to turn on the Full Screen magnification. Use **Alt-1** to set 1x Magnification (no magnification). Use **Alt-I** to turn on the Color Inversion. Now you can use **Alt-S** to toggle color inversion of your screen. If helpful, other magnification settings can be used - Use **Alt+=** to step up by 0.1x magnification.

Shortcut Keys: For consistency, throughout this document, all shortcut keys will be represented as their default setting, e.g. Alt-[Key]. Please note that there are 3 selectable keystroke combinations available for all these keys - Alt-[Key], Alt-Shift-[Key], and Ctrl-Shift-[Key] (this is configurable in the Advanced menu). See the Complete List of Shortcut Keys for more information.

The Magnifier Return to Defaults - Common Configurations

Alt-D Return to default size (window mode only)

Most users appreciate the quick & easy shortcut keys that allow rapid changes & access to all of The Magnifier's feature. However, there can arise conflict with other applications, and unexpected actions if these shortcut keys are used separately from The Magnifier. To quickly & easily return to the default settings with The Magnifier, use **Alt-D**

Shortcut Keys: For consistency, throughout this document, all shortcut keys will be represented as their default setting, e.g. Alt-[Key]. Please note that there are 3 selectable keystroke combinations available for all these keys - Alt-[Key], Alt-Shift-[Key], and Ctrl-Shift-[Key] (this is configurable in the Advanced menu). See the Complete List of Shortcut Keys for more information.

The Magnifier tracks Mouse Cursor - Common Configurations

Alt-O Toggles tracking (following) the Mouse Cursor

When operating in the Window mode, the actual positioning of The Magnifier window can sometimes be problematic, depending on the actual application being used and its requirements. By enabling the Track Cursor mode (or The Magnifier window follows the mouse cursor), The Magnifier window is able to "tag along" with the mouse cursor. To enable or cancel this mode, use **Alt-O**

Shortcut Keys: For consistency, throughout this document, all shortcut keys will be represented as their default

setting, e.g. Alt-[Key]. Please note that there are 3 selectable keystroke combinations available for all these keys - Alt-[Key], Alt-Shift-[Key], and Ctrl-Shift-[Key] (this is configurable in the Advanced menu). See the Complete List of Shortcut Keys for more information.

The Magnifier Starts with Windows - Common Configurations

When you install using the IMG installation files, you have the option of selecting "Add to Startup Group" - if you have already installed, used the MSI (Windows) installer, or need to

remove or add to the StartUp group, please refer to these notes.

The quickest and easiest way to access the StartUp group is to do the following:

- Right-click on the Start Menu button
- Select Explore all users
- Double-click (select) the Programs folder
- Double-click (select) the StartUp folder
- If The Magnifier's icon is there and you want to remove it, you can delete it.
- If you want to add The Magnifier's icon, you can right-click, and select New | Shortcut - then select The Magnifier from the \Program Files\The Magnifier folder. Alternatively, you can copy the Desktop icon, then paste it into this folder.

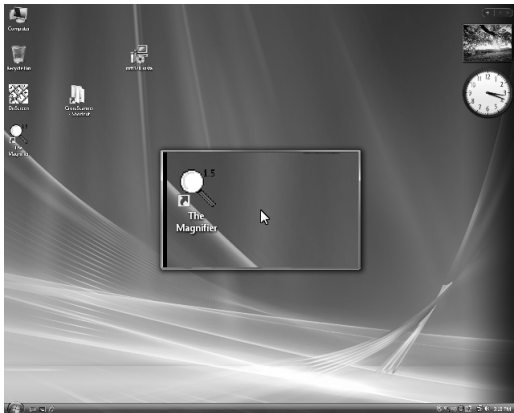
Chapter 3. Common Configurations

Note: The actual location changes based on which version of Windows you use. The above outlines how to add to the All Users section (so All Users will be affected). You can also only add the icon to your StartUp files. The details of Windows, and how to configure various versions of Windows is beyond the scope of this Help document.

Chapter 4. Windowed Operation

The Magnifier Windowed Operation Overview

The Magnifier Windowed Operation Overview outlines all options for running as a window.

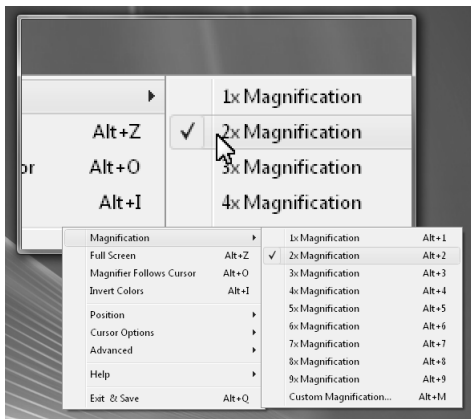


The above image is an example of The Magnifier running in a window with the default settings.

Magnification

This feature allows you to control the

magnification of your screen. You can select the magnification via the menu or by using **Alt-1**, **Alt-2**, **Alt-3**, **Alt-4**, **Alt-5**, **Alt-6**, **Alt-7**, **Alt-8**, **Alt-9**, or by using **Alt-M** for the Magnification dialog.



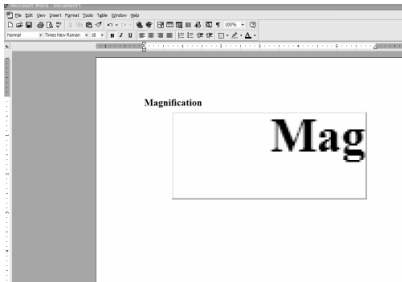
1x Magnification This selection does not change the image on your computer screen. By

making this selection you will simply be able to view the screen without any magnification (exactly as it appears). Keyboard Shortcut:

Alt-1

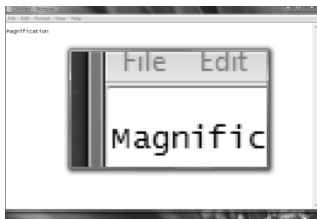
2x Magnification This selection will allow The Magnifier to show the images on your screen twice as large as they would normally appear. Keyboard Shortcut: **Alt-2**

3x Magnification This selection will allow The Magnifier to show the image on your screen three times as large as they would normally appear. Keyboard Shortcut: **Alt-3**



4x Magnification This selection will allow The Magnifier to show the image on your screen four times as large as they would normally appear. Keyboard Shortcut: **Alt-4**

5x Magnification This selection will allow The Magnifier to show the image on your screen five times as large as they would normally appear. Keyboard Shortcut: **Alt-5**



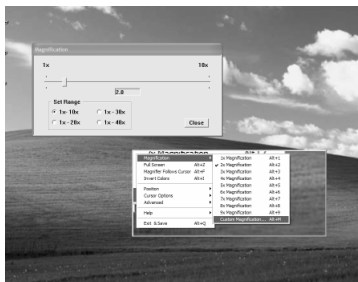
6x Magnification This selection will allow The Magnifier to show the image on your screen six times as large as they would normally appear. Keyboard Shortcut: **Alt-6**

7x Magnification This selection will allow The Magnifier to show the image on your screen seven times as large as they would normally appear. Keyboard Shortcut: **Alt-7**

8x Magnification This selection will allow The Magnifier to show the image on your screen eight times as large as they would normally appear. Keyboard Shortcut: **Alt-8**

9x Magnification This selection will allow

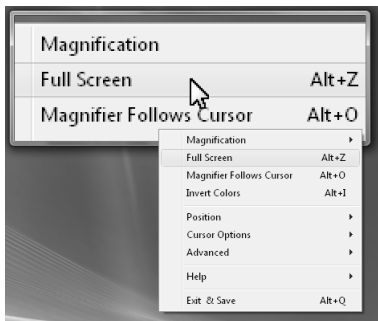
The Magnifier to show the image on your screen nine times as large as they would normally appear. Keyboard Shortcut: **Alt-9**



Custom Magnification This selection allows you to customize your screen magnification. The default settings on this menu will be a range of 1x-10x's the magnification of the original image, but if you wish to magnify more, there is a dialog labeled 'Set Range' which will allow you to chose 1x-10x's, 1x-20x's, 1x-30x's, or 1x-40x's. Once you

have selected the proper range, move the slider to your desired magnification settings then click to close. Keyboard Shortcut: **Alt-M**

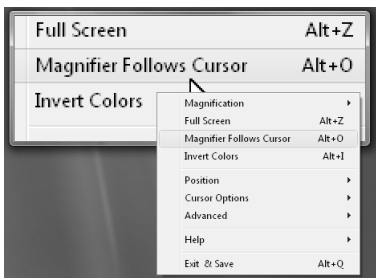
Full Screen



Full Screen When selected in the Windowed mode of operation, this will go to the Full Screen mode of operation. Keyboard Shortcut:

Alt-Z. For further details on Full Screen operation, see the next chapter.

The Magnifier Follows Cursor



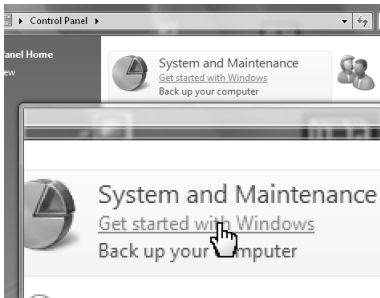
This option results in The Magnifier's window to follow the cursor as you move it across your screen. The position of The Magnifier window relative to the mouse cursor will change to

make sure it is always visible on the screen. You can enable / disable this mode by using the menu, or the keyboard shortcut **Alt-O**.



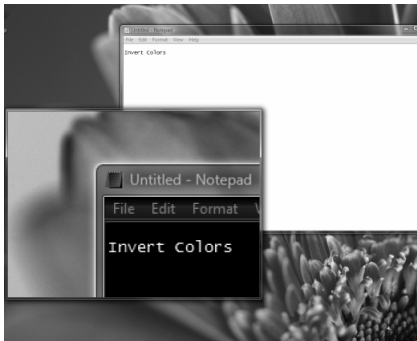
When enabled, there will be a notification window shown.

Chapter 4. Windowed Operation



When operating in this mode, the ability to click (right-click) on The Magnifier window is impossible (since The Magnifier window constantly repositions based on the actual mouse cursor position). To disable this mode, you can click on the small icon in the tray to access the menu and toggle the mode by selecting the menu option, or you can use the keyboard shortcut **Alt-O**, or you can hold the mouse cursor at the bottom right of the screen for several seconds.

Invert Colors



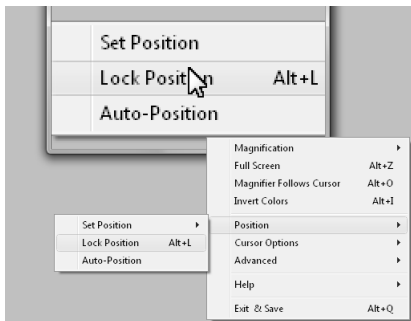
This option causes the colors of the screen to become inverted which can help individuals who need high-contrast viewing. Keyboard Shortcut: **Alt-I**

Position

This feature allows the user to position The Magnifier's window where ever they desire it to be on their computer screen. The Magnifier's window can be moved manually at anytime, simply by holding down the left mouse button and dragging the window to your desired location, or by dragging the window frame(s) as necessary. Also note that if you click on The Magnifier's window, you can use your Arrow keys and Shift-Arrow keys to adjust the size & position.

Note: If you left click and hold for more than a second, the drag-lock will engage. To clear this, left click again.

Chapter 4. Windowed Operation



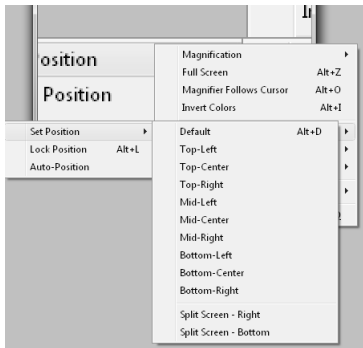
Set Position Within the Position menu there is a Set Position sub-menu with a list of preset window positions.

Lock Position This feature allows you to keep a specific spot on your computer's screen magnified in The Magnifier while you work. When you click on "Lock Position" a notification window will be displayed indicating how to use the feature. You may move your mouse around to locate the exact magnification point. Once your mouse cursor is positioned at

the desired location, click the with your left-mouse button. This will lock the area that is being magnified. To clear the lock, use **Alt-L** again, or clear the check mark in the Position menu.

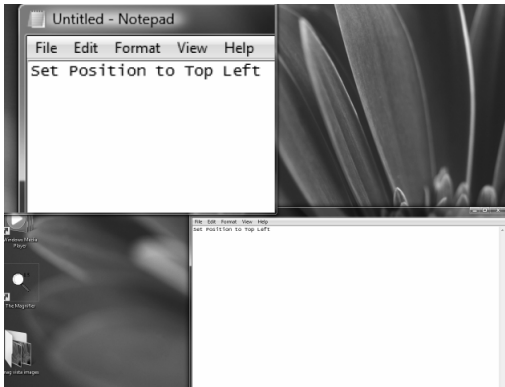
Auto-Position This feature, when enabled, allows you to see under The Magnifier's window automatically. When you hover over The Magnifier's window with your cursor for a few seconds, it will automatically reposition to another screen location. The sequence is top-left to top-right to bottom-left to bottom-right. If you are in one of the "Split Screen" options this feature allows you to hover over The Magnifier's window to have it automatically move to the other half of your screen.

Set Position



This menu is where the pre-set positions for The Magnifier's window can be found.

Default The default option sets The Magnifier's window back to the center of your computer's screen. You can also use **Alt-D** keyboard shortcut to return to the default position.



Top-Left The top-left option will take The Magnifier's window to the top-left corner of your screen.

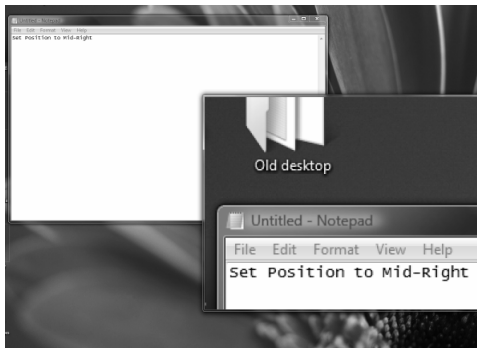
Top-Center This option sets The Magnifier's window to the top-center of your screen.

Top-Right This option sets The Magnifier's window to the top-right corner of your screen.

Mid-Left This option sets The Magnifier's

window in the left, center portion of your screen.

Mid-Center This option sets The Magnifier's window in the exact center of your screen.



Mid-Right This option sets The Magnifier's window in the right, center portion of your screen.

Bottom-Left The option sets The Magnifier's window in the bottom-left side of your screen.

Bottom-Center This option sets The Magnifier's window in the center portion of the bottom your screen.

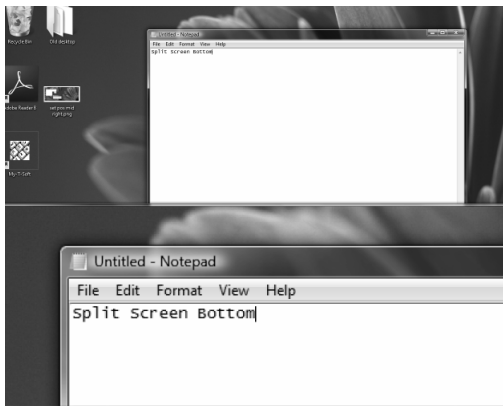
Bottom-Right This option will place The Magnifier's window in the bottom-right portion of your screen.



Split Screen - Right This option will enlarge The Magnifier's window to the entire right side of your screen. In order to utilize the items on

Chapter 4. Windowed Operation

the right-hand portion of your computer screen you will need to move The Magnifier's window to the left-hand portion of the screen - which can be done by simply dragging it with your left mouse button. The benefit to this option is that the area that The Magnifier is magnifying will increase greatly.



Split-Screen - Bottom This option will enlarge

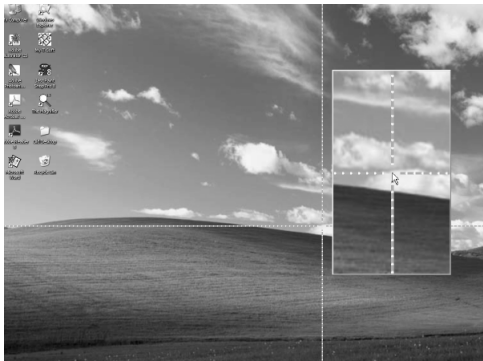
The Magnifier's window to the entire bottom portion of your screen. In order to utilize the items normally found on the bottom of your screen, you must drag The Magnifier's window using your left mouse button. The benefit to this option is that it enlarges the area The Magnifier is magnifying.

Cursor Options

The options in this portion of the menu allow you to control different aspects of how The Magnifier works with the mouse cursor.



Display Cursor If this option is checked in your menu then a magnified mouse cursor will not be visible in The Magnifier's window, shown at the relative location of the current mouse cursor in the magnified view. When this option is clear, the mouse cursor will not be shown in The Magnifier's window. Keyboard Shortcut: **Alt-C**



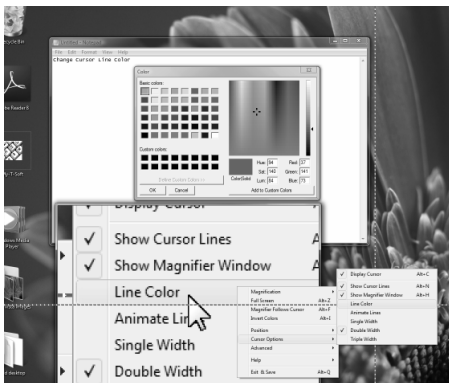
Show Cursor Lines This option causes two perpendicular lines, which intersect at your cursor, to appear on your screen. This option can be a useful tool if you are trying to locate the cursor, or have visual impairments that make it difficult to see the entire screen.

Keyboard Shortcut: **Alt-N**

Show Magnifier Window When selected, this option will show The Magnifier's window, but

Chapter 4. Windowed Operation

if it is unchecked in The Magnifier's menu, the window will no longer be visible on your computer screen. You can use the **Alt-S** keyboard shortcut to toggle the visibility of The Magnifier window.



Line Color This option will allow you to change the color of the cursor lines.

Animate Lines This option animates the

movement of the cursor lines, which may make it easier to find for certain individuals.

Single Width This option controls the width of your cursor lines, making them the default - and smallest - size The Magnifier offers.

Double Width This option makes the cursor lines twice the size of the default option.

Triple Width This option makes the cursor lines three times the size of the default option.

Advanced

The Advanced Menu contains various settings & options that are more advanced or address specialized settings and features.

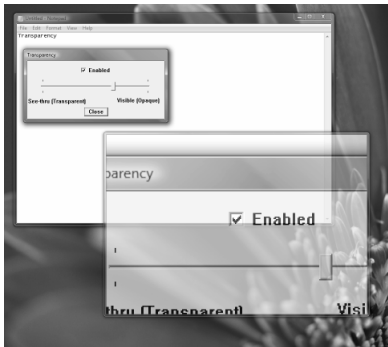


Use Magnifier Menu This option will allow you to use The Magnifier's window instead of a standard menu when you right-click on The Magnifier's window. This menu has large type, and fills the screen - see Magnifier Menu for more details.

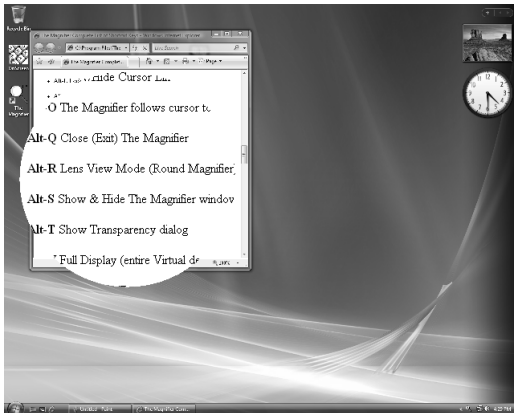
Use Magnifier Toolbar This option displays a separate Toolbar that can control some basic

functions such as Show/Hide, Full Screen/Windowed, 2X/3X, increase or decrease magnification. This is by default On. By selecting this option, you can turn off or turn on the Toolbar. The Toolbar provides a first time user a visual tool that allows them to perform basic functions, without having to learn the keyboard shortcuts or how to access the menu. This was originally suggested for situations where The Magnifier was used in a public locations, and new/unfamiliar users would be exposed to The Magnifier without any previous knowledge on how to operate The Magnifier. There are various options - see The Magnifier Toolbar for more details.

Full Screen Options This menu has options for the Full Screen mode of operation - refer to the next chapter for these options.



Transparency Level This option controls the visibility of The Magnifier's window. When you select this option on your menu it will bring you to a sliding bar with a window above it labeled "Enable". This window must be checked in order to to change the transparency of The Magnifier's window. Keyboard Shortcut: **Alt-T**



Lens View Mode This option transforms The Magnifier window into a circle (lens view). You can also toggle this mode with the keyboard shortcut **Alt-R**. The circle size is controlled by the shortest size (height or width) when going into lens view mode. When returning to normal, the window will always appear square (based on the circle size). For

larger or smaller circles, you must size The Magnifier window prior to changing modes. The memory mnemonic for Alt-R is "Go to a Round Lens (window)"

Presentation Mode This mode temporarily hides the actual mouse cursor so during presentations an unobstructed screen image can be shown. You can also toggle this mode with the keyboard shortcut **Alt-G**. When first enabled, you may need to move the mouse cursor to hide it. When operating in this mode, a normal mouse click will re-enable the view of the mouse cursor, or using Alt-G again. Note that this only affects the cursor OVER The Magnifier window. The memory mnemonic for Alt-G is "Go away cursor"

Always Topmost Window This option toggles whether The Magnifier window will be topmost (shown over all other windows). This option is set on and not accessible if the

Magnifier over Menus is set on. When this option is clear, The Magnifier window can fall behind other windows in the system.

Magnifier Over Menus When this option is on, The Magnifier window will be shown over all menus on your computer. If this option is clear, The Magnifier window will be displayed behind menus.

Left Click & Drag The Magnifier Set this option on so you will be able to drag your The Magnifier's window using your left-mouse button. When this option is cleared, the left button will open the menu when The Magnifier window is clicked on.

Track Text Caret When enabled, this option will track the position of the text caret, and magnify based on this position (rather than the mouse cursor). To return the magnification point to the mouse cursor, you must move your mouse. If you do not want to have the text &

edit fields override the magnification point, clear this option.

Track Dialogs & Keyboard When enabled, this option reacts to dialogs being shown, and tracks keyboard focus on dialogs, menus, the desktop, and other windows. To return the magnification point to the mouse cursor, you must move your mouse.

Note: The Track Text Caret and Track Dialogs & Keyboard options uses Windows events to gather information about these types of activities. Older applications, and changes in versions of Windows may affect how well these operate for you. You should make sure all updates are applied for best results. If the operation is not useful to you, then you can clear one or both of these options.

Note: You can also toggle these 2 options (Track Text Caret, and Track Dialogs & Keyboard) On and Off with the keyboard shortcut **Alt-J**. In certain cases, when typing or doing different actions, having The Magnifier track the keyboard may be problematic - this keyboard shortcut allows you to disable this tracking temporarily. Also, if the feature is off, and you start typing, you can quickly turn it back on. The memory mnemonic for Alt-J is "Stop **J**umping for the Keyboard"



Keyboard Shortcuts This option will allow you to control the hot key options for The Magnifier.

Close All Other Magnifiers This option will close all but the current instance of The Magnifier with one easy click.

Close All Magnifiers This option will close The Magnifier with one easy click.

Exit & Do Not Save This option will close

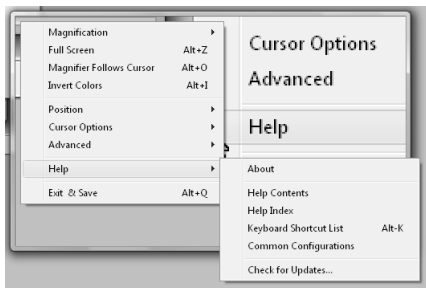
The Magnifier without saving the changes you have made for your preferences since the last time it has been opened.

Restart Windows This option allows you to restart windows without using the Start menu.

Exit Windows This option allows you to exit windows (Log off) without using the Start menu.

Reboot System This option will close your system (Log off) without using the Start menu.

Help



About This option opens a notification window describing the version and copyright information about The Magnifier.

Help Contents This option opens the Table of Contents for this Help document.

Help Index This option opens the Index for this Help document.

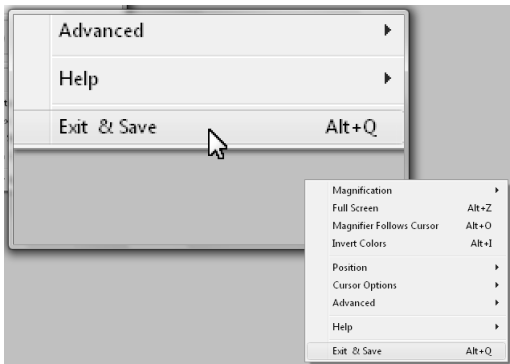
Keyboard Shortcut List This option opens

the Complete List of Keyboard Shortcuts in this Help document. Keyboard Shortcut: **Alt-K**

Common Configurations This option opens the Basic Operations and Common Configurations sections in this Help document.

Check for Updates This option checks the Internet for updates that have been provided for your copy of The Magnifier. Before selecting this option, make sure that you are using a computer with access to the Web.

Exit & Save



Exit & Save This option will allow you to exit The Magnifier and save the personal settings you have set up while using the product.

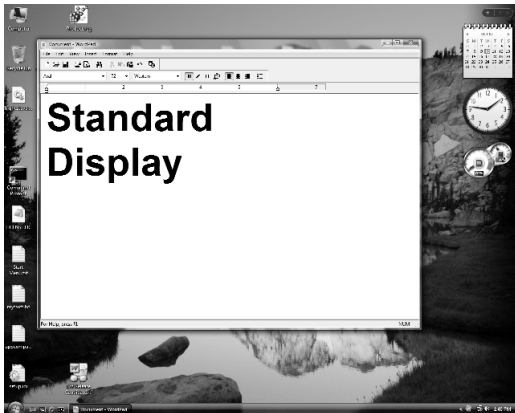
Keyboard Shortcut: **Alt-Q**

Chapter 5. Full Screen Operation

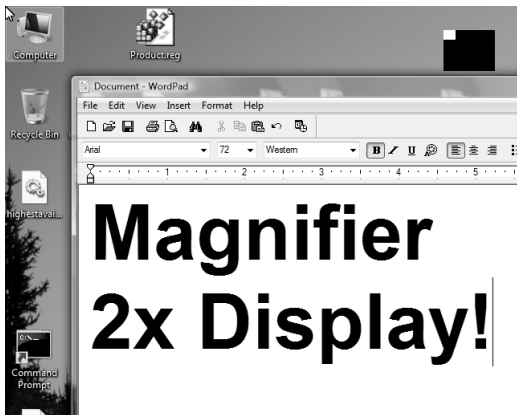
The Magnifier Full Screen Operation Overview

This chapter outlines the features available when running The Magnifier in the Full Screen mode.

Chapter 5. Full Screen Operation



The above image is a normal display (screen image).



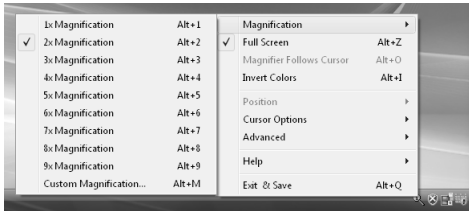
The above is the same screen image, with The Magnifier running in Full Screen mode, with 2x magnification (and text changed in the document for clarity).

When running The Magnifier in Full Screen mode, a portion of the screen will be magnified to fill the entire display area. There is an optional reference window (default on) shown

in the upper-right (which will hop out of the way if you mouse over it to the upper-left), which indicates the area of the screen being magnified. Note that as you increase your magnification, less and less of the actual display gets shown. At 2x magnification, only one-quarter of your entire display is visible in the magnified image. At 4x magnification, only one-sixteenth of your entire display is visible in the magnified image. By using the reference window, you can quickly see what area is being magnified. For some individuals, in certain cases, it may be useful to switch to single-magnification (**Alt-1**) or hide the magnified window (**Alt-S**) to see the entire display area.

Magnification

This feature allows you to control the magnification of your screen. You can select the magnification via the menu or by using **Alt-1, Alt-2, Alt-3, Alt-4, Alt-5, Alt-6, Alt-7, Alt-8, Alt-9**, or by using **Alt-M** for the Magnification dialog.



1x Magnification This selection does not change the image on your computer screen. By making this selection you will simply be able to view the screen without any magnification (exactly as it appears). In Full Screen mode, this is effectively the same as using **Alt-S** to

hide The Magnifier window. Keyboard

Shortcut: **Alt-1**

2x Magnification This selection will allow The Magnifier to show the images on your screen twice as large as they would normally appear. Keyboard Shortcut: **Alt-2**

3x Magnification This selection will allow The Magnifier to show the image on your screen three times as large as they would normally appear. Keyboard Shortcut: **Alt-3**

4x Magnification This selection will allow The Magnifier to show the image on your screen four times as large as they would normally appear. Keyboard Shortcut: **Alt-4**



5x Magnification This selection will allow The Magnifier to show the image on your screen five times as large as they would normally appear. Keyboard Shortcut: **Alt-5**

6x Magnification This selection will allow The Magnifier to show the image on your screen six times as large as they would normally appear. Keyboard Shortcut: **Alt-6**

7x Magnification This selection will allow The Magnifier to show the image on your screen seven times as large as they would normally appear. Keyboard Shortcut: **Alt-7**

8x Magnification This selection will allow The Magnifier to show the image on your screen eight times as large as they would normally appear. Keyboard Shortcut: **Alt-8**

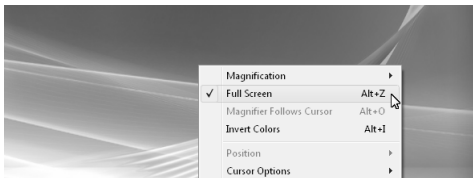
9x Magnification This selection will allow The Magnifier to show the image on your screen nine times as large as they would normally appear. Keyboard Shortcut: **Alt-9**



Custom Magnification This selection allows you to customize your screen magnification. The default settings on this menu will be a range of 1x-10x's the magnification of the original image, but if you wish to magnify more, there is a dialog labeled 'Set Range' which will allow you to chose 1x-10x's, 1x-20x's, 1x-30x's, or 1x-40x's. Once you

have selected the proper range, move the slider to your desired magnification settings then click to close. Keyboard Shortcut: **Alt-M**

Full Screen



Full Screen When selected in the Full Screen mode of operation, this will clear this setting, and you will go to the Windowed mode of operation. Keyboard Shortcut: **Alt-Z** Refer to the previous chapter for details on running The Magnifier in the Windowed Mode of operation.

Invert Colors



This option causes the colors of the screen to become inverted which can help individuals who need high-contrast viewing. Keyboard Shortcut: **Alt-I**

Cursor Options

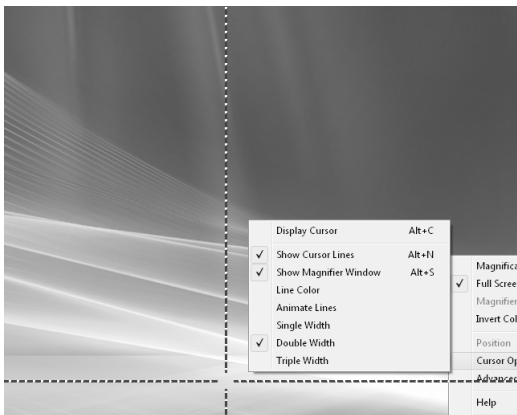
The options in this portion of the menu allow you to control different aspects of how The Magnifier works with the mouse cursor.



Display Cursor If this option is checked in your menu then a magnified mouse cursor will not be visible in The Magnifier's window,

shown at the relative location of the current mouse cursor in the magnified view. When this option is clear, the mouse cursor will not be shown in The Magnifier's window. Keyboard Shortcut: **Alt-C**

IMPORTANT NOTE: When operating in the Full Screen mode, if the cursor is displayed, you will see 2 cursors - the system cursor and the magnified cursor displayed in The Magnifier. Depending on your system capabilities, there may be a noticeable separation between the 2 cursor images at times. You can turn off the Display Cursor option in this menu, or use the **Alt-C** keyboard shortcut. You may also control the system mouse cursor display in the Mouse Properties (available from the Control Panel).



Show Cursor Lines This option causes two perpendicular lines, which intersect at your cursor, to appear on your screen. This option can be a useful tool if you are trying to locate the cursor, or have visual impairments that make it difficult to see the entire screen.

Keyboard Shortcut: **Alt-N**

FULL SCREEN NOTE: When operating in the Full Screen mode, when the Cursor Lines are visible, you have the Track Text Caret enabled, and you are typing in a document (so the text caret tracking is occurring), there will be a disconnect between the magnified image and the cursor lines. If this causes visual display problems, you can toggle the Cursor Line display during text input by using the **Alt-N** keyboard shortcut.

Show Magnifier Window When selected, this option will show The Magnifier's window, but if it is unchecked in The Magnifier's menu, the window will no longer be visible on your computer screen. You can use the **Alt-S** keyboard shortcut to toggle the visibility of The Magnifier window.

Line Color This option will allow you to

change the color of the cursor lines.

Animate Lines This option animates the movement of the cursor lines, which may make it easier to find for certain individuals.

Single Width This option controls the width of your cursor lines, making them the default - and smallest - size The Magnifier offers.

Double Width This option makes the cursor lines twice the size of the default option.

Triple Width This option makes the cursor lines three times the size of the default option.

Advanced

The Advanced Menu contains various settings & options that are more advanced or address specialized settings and features.

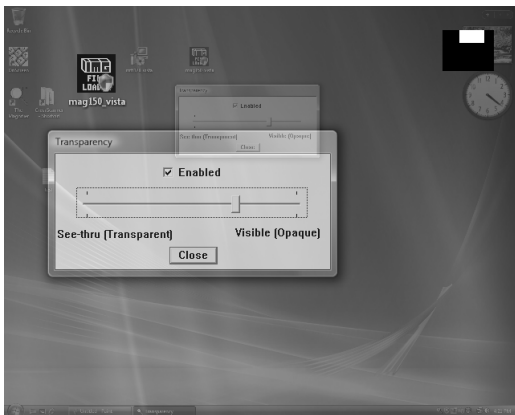


Use Magnifier Menu This option will allow you to use The Magnifier's window instead of a standard menu when you right-click on The Magnifier's window. This menu has large type, and fills the screen - see Magnifier Menu for more details.

Use Magnifier Toolbar This option displays a separate Toolbar that can control some basic functions such as Show/Hide, Full

Screen/Windowed, 2X/3X, increase or decrease magnification. This is by default On. By selecting this option, you can turn off or turn on the Toolbar. The Toolbar provides a first time user a visual tool that allows them to perform basic functions, without having to learn the keyboard shortcuts or how to access the menu. This was originally suggested for situations where The Magnifier was used in a public locations, and new/unfamiliar users would be exposed to The Magnifier without any previous knowledge on how to operate The Magnifier. There are various options - see The Magnifier Toolbar for more details.

Full Screen Options This opens a sub menu of Full Screen Options.



Transparency Level This option controls the visibility of The Magnifier's window. When you select this option on your menu it will bring you to a sliding bar with a window above it labeled "Enable". This window must be checked in order to to change the transparency of The Magnifier's window. Keyboard Shortcut: **Alt-T**

Lens View Mode This option is not available in Full Screen mode.

Presentation Mode This mode temporarily hides the actual mouse cursor so during presentations an unobstructed screen image can be shown. You can also toggle this mode with the keyboard shortcut **Alt-G**. When first enabled, you may need to move the mouse cursor to hide it. When operating in this mode, a normal mouse click will re-enable the view of the mouse cursor, or by using Alt-G again. In the Full Screen mode, when this is enabled, you cannot operate as normal - however, the next mouse click will disable this mode. The memory mnemonic for Alt-G is "Go away cursor"

Always Topmost Window This option is not available in Full Screen mode.

Magnifier Over Menus This option is not available in Full Screen mode.

Left Click & Drag The Magnifier This option is not available in Full Screen mode.

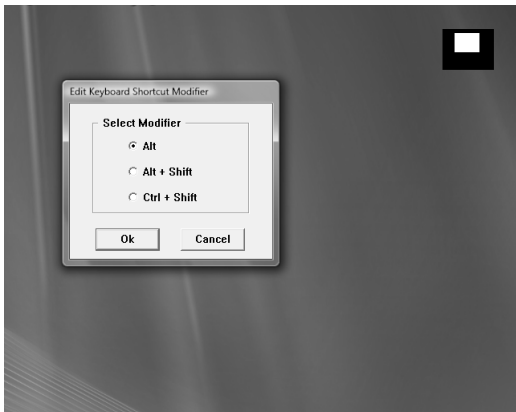
Track Text Caret When enabled, this option will track the position of the text caret, and magnify based on this position (rather than the mouse cursor). To return the magnification point to the mouse cursor, you must move your mouse. If you do not want to have the text & edit fields override the magnification point, clear this option.

Track Dialogs & Keyboard When enabled, this option reacts to dialogs being shown, and tracks keyboard focus on dialogs, menus, the desktop, and other windows. To return the magnification point to the mouse cursor, you must move your mouse.

Note: The Track Text Caret and Track Dialogs & Keyboard options uses Windows events to gather information

about these types of activities. Older applications, and changes in versions of Windows may affect how well these operate for you. You should make sure all updates are applied for best results. If the operation is not useful to you, then you can clear one or both of these options.

Note: You can also toggle these 2 options (Track Text Caret, and Track Dialogs & Keyboard) On and Off with the keyboard shortcut **Alt-J**. In certain cases, when typing or doing different actions, having The Magnifier track the keyboard may be problematic - this keyboard shortcut allows you to disable this tracking temporarily. Also, if the feature is off, and you start typing, you can quickly turn it back on. The memory mnemonic for Alt-J is "Stop **J**umping for the Keyboard"



Keyboard Shortcuts This option will allow you to control the hot key options for The Magnifier.

Close All Other Magnifiers This option will close all but the current instance of The Magnifier with one easy click. In the Full

Screen mode of operation, there is only 1 instance running, so this will have no effect.

Close All Magnifiers This option will close The Magnifier with one easy click.

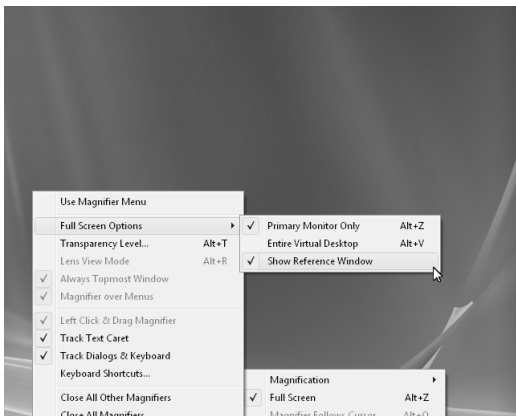
Exit & Do Not Save This option will close The Magnifier without saving the changes you have made for your preferences since the last time it has been opened.

Restart Windows This option allows you to restart windows without using the Start menu.

Exit Windows This option allows you to exit windows (Log off) without using the Start menu.

Reboot System This option will close your system (Log off) without using the Start menu.

Full Screen Options



Primary Monitor Only This toggles the full screen mode of operation on the primary monitor (main display) Unless you have multiple monitors, this is the most common option. Keyboard Shortcut: **Alt-Z**

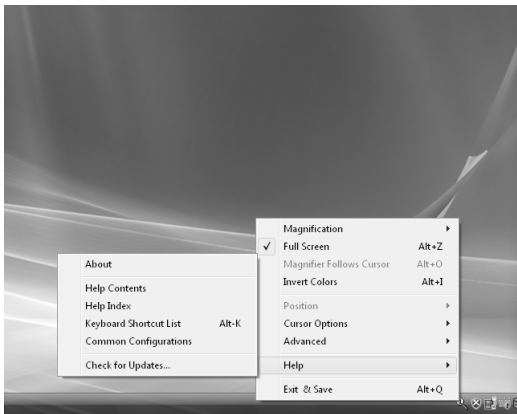
Entire Virtual Desktop If you have multiple monitors, this option uses the entire virtual desktop space as your "Full Screen" magnifier. Keyboard Shortcut: **Alt-V**

Show Reference Window This toggles the display of the Full Screen reference window (upper-right/upper-left).

Note: The Reference window will react to the mouse cursor - if you slide the mouse cursor over the window, it will reposition to the opposite side of the display. This allows you to view underneath the window in an easy manner - just slide the mouse over the window and it will move between the upper-right and upper-left. If you do not want the window at all, select the menu option to clear the Show Reference Window.

Note: When using multiple monitors, for best results using a sequential layout (e.g. [1][2], rather than [2][1]) will work better, especially in Windows Vista. This has to do with the system's virtual space origin - 0,0 will work better than a negative origin (refer to Windows multiple monitor desktop implementation for more details). For best results, use monitor 1 as the left-most / top-most monitor.

Help



About This option opens a notification window describing the version and copyright information about The Magnifier.

Help Contents This option opens the Table of Contents for this Help document.

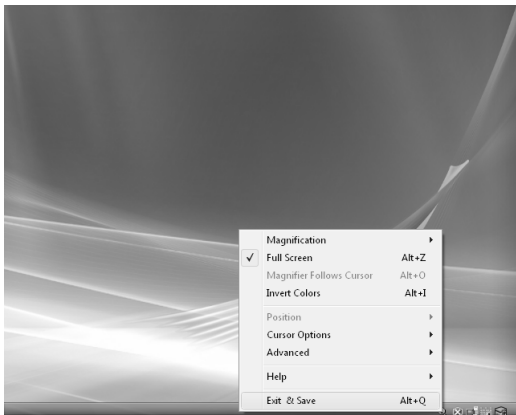
Help Index This option opens the Index for this Help document.

Keyboard Shortcut List This option opens the Complete List of Keyboard Shortcuts in this Help document. Keyboard Shortcut: **Alt-K**

Common Configurations This option opens the Basic Operations and Common Configurations sections in this Help document.

Check for Updates This option checks the Internet for updates that have been provided for your copy of The Magnifier. Before selecting this option, make sure that you are using a computer with access to the Web.

Exit & Save



Exit & Save This option will allow you to exit The Magnifier and save the personal settings you have set up while using the product.
Keyboard Shortcut: **Alt-Q**

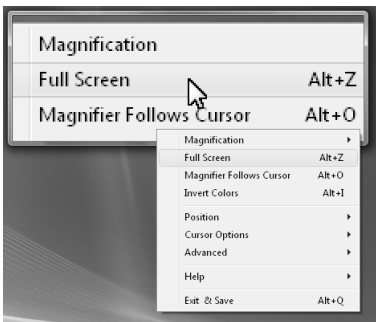
Chapter 6. Magnifier Menu

The Magnifier Menu Overview

The Magnifier provides 2 menu modes. There is a special Magnifier Menu (which uses your whole screen for the menuing and uses very large text), and the standard Windows menu system. This chapter provides a reference for the full screen Magnifier Menu.

Magnification...	Position...
Full Screen	Cursor Options...
Track Cursor	Advanced...
Invert Colors	Exit & Save
Help...	• The Magnifier

The above image is the Magnifier menu.



The above image is the standard Windows menu.

Magnifier Menu - Main Menu

Magnification...	Position...
Full Screen	Cursor Options...
Track Cursor	Advanced...
Invert Colors	Exit & Save
Help...	• The Magnifier

This chapter covers the options available from within the menuing system, using the Magnifier menu as an example of all menu options.

When selected in the Advanced Menu, the

large-type, full-screen Magnifier Menu will be displayed whenever the menu is accessed (right-clicking on the window in the windowed mode of operation, or clicking on the small icon in the tray). To return to the standard Windows menu, go into the Advanced menu again, and select "Standard Menu".

When using the Magnifier Menu, the interface is straightforward. The menu selection highlights as you move your mouse cursor over the items, and to select you left click. If you want to exit the menu, at any time click on The Magnifier area at the bottom right. On sub-menus, there will be a "Back" button which will revert to the previous menu. There is no keyboard interface for the Magnifier menus.

Magnification... opens the Magnification Menu.

Full Screen toggles the Full Screen /

Windowed modes of operation. See Windowed Operation or Full Screen Operation.

Track Cursor toggles Cursor Tracking. See Windowed Operation. Not available in Full Screen mode.

Invert Colors inverts colors in the magnified display. See Windowed Operation or Full Screen Operation.

Help... opens the Help Menu.

Position... opens the Position Menu.

Cursor Options... opens the Cursor Options Menu.

Advanced... opens the Advanced Menu.

Exit & Save exits The Magnifier and saves settings. See Windowed Operation or Full Screen Operation.

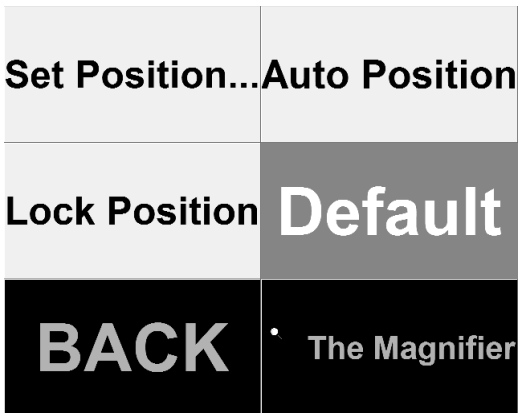
Magnifier Menu - Magnification Menu

1x Magnification	6x Magnification
✓ 2x Magnification	7x Magnification
3x Magnification	8x Magnification
4x Magnification	9x Magnification
5x Magnification	Custom
BACK	• The Magnifier

Magnification Menu The Magnification menu allows you to select various magnification factors, or open the Magnification dialog to customize the magnification level. See

Windowed Operation or Full Screen Operation.

Magnifier Menu - Position Menu



Note: This sub-menu is not available in the Full Screen mode of operation.

Set Position... opens the Set Position Menu.

Auto Position enables the automatic repositioning of the The Magnifier window. See Windowed Operation.

Lock Position allows you to fix the magnification point. See Windowed Operation.

Magnifier Menu - Set

Position Menu

Top-Left	Mid-Left
Mid-Right	Bottom-Right
Top-Center	Mid-Center
Bottom-Left	Split Screen H
Top-Right	Split Screen V
Bottom-Center	Default
BACK	• The Magnifier

Note: This sub-menu is not available in the Full Screen mode of operation.

Set Position Menu The Set Position Menu

allows you to select various positions & return to defaults. See Windowed Operation.

Magnifier Menu - Cursor Options Menu

<input checked="" type="checkbox"/> Display Cursor	<input checked="" type="checkbox"/> Magnifier Window
<input type="checkbox"/> Show Cursor Lines	<input checked="" type="checkbox"/> Single Width
<input checked="" type="checkbox"/> Animate Lines	Double Width
Lines Color	Triple Width
BACK	• The Magnifier

Cursor Options Menu The Cursor Options menu allows you to select cursor lines and display options. See *Windowed Operation* or *Full Screen Operation*.

Magnifier Menu - Advanced

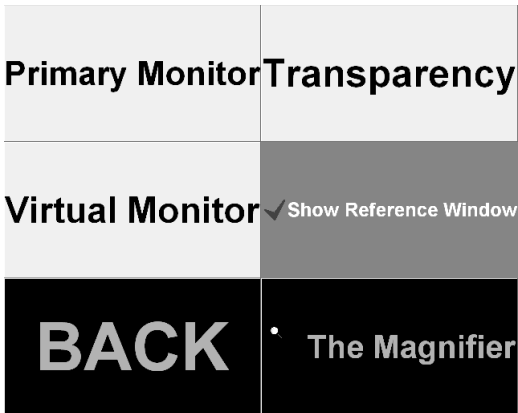
Menu

Standard Menu	✓	Track Caret
✓	Toolbar	✓
Full Screen...		Track Focus
✓	Transparency...	Shortcuts...
Lens View		Close Other Mags
Presentation		Close All Mags
✓	Always Topmost	Exit & Do Not Save
✓	Mag Over Menus	Restart Windows
✓	Drag Magnifier	Exit Windows
		Reboot System
BACK	•	The Magnifier

Full Screen... opens the Full Screen Options Menu.

Advanced Menu The Advanced menu allows you to select various advanced features and options. See Windowed Operation or Full Screen Operation.

Magnifier Menu - Full Screen Options Menu



Full Screen Options Menu The Full Screen Options menu allows you to select advanced full screen features and options. See Full Screen Options.

Magnifier Menu - Help Menu

About	Help
Keys List	Index
Common Uses	Updates...
BACK	The Magnifier

Help Menu The Help menu gives you access into this help document, shows information About this The Magnifier release, and allows you to check for updates. See Windowed Operation or Full Screen Operation.

Part III. The Magnifier Technical Documentation

**Advanced User
Notes, Technical
Documentation,
File Information,
and various Other**

Information about The Magnifier.

Chapter 7 - Advanced User Notes details additional product information, Final Release Notes, Technical Notes, Advanced User Notes, Initialization File Documentation, Application Notes, Developer information, and Customer Suggestions.

Chapter 7. Advanced User Notes

Advanced User Notes & Information

The Advanced User Notes and Technical Documentation covers a wide-range of topics & information. It is important to understand that most users will simply & quickly find the most useful way to magnify with the software, so detailing all of the features, options, settings mixed in with the standard product help would overwhelm the majority of users.

Note: For up-to-date information, and other specific technical issues, it will

always be important to refer to the on-line support database at

<http://www.imgpresents.com/imgfaq.htm>

If you have been referred to this section, or have been unable to resolve your question(s) or problems within this manual, on-line help, and tutorial, or are an advanced user familiar with Windows Initialization files (INI type files), the Registry, and wish to learn all of The Magnifier configuration Options, please read the following chapter. For developers, integrators, or technicians, the following information should be read in its entirety - also refer to the IMG Developer's Kit for even more options & other advanced information.

Final Release Notes

Version 1.10 - Product release 1997

Version 1.20 - Product release 1998

Version 1.50 - Updates for Windows Vista, Full Screen Magnifier options. October 17, 2007

Version 1.50 Release 2 - maintenance updates, help updates. March 5, 2008

Version 1.50 Release 3 - added Toolbar, maintenance updates, suggested features, help updates. July 16, 2009

Version 1.50 Release 4 - Windows 7 compatibility. November 24, 2009

Version 1.50 Release 5 - License Manager updates.

Version 1.50 Release 5 - 9/17/2012

Important User Notes

The Magnifier uses built-in Windows video & window display APIs (Application Programming (Programmer) Interfaces) and does not pretend to be anything but useful utility for some users while operating within Windows.

The Magnifier attempts to provide useful magnification & other user-suggested approaches that enable users with some visual impairments to better operate & use applications within Windows. For individuals with serious visual impairments, we strongly recommend that professional opinions be sought.

The Magnifier uses available capabilities within Windows to provide requested utilities and capabilities. In essence, The Magnifier is just a standard Windows application that

provides special functionality.

Technical Notes

The Magnifier is a standard Windows Application and does not require any special drivers, and should work with all keyboard, mouse, and video drivers that are compatible with the ones that ship with Microsoft Windows.

The Magnifier Files & File Notes & Installation Information

The Magnifier Files & File Notes

Files located in the The Magnifier Installation Directory:

The following files are REQUIRED for proper operation of

The Magnifier: (Version specific files indicated)

* - indicates the minimum files required for functional operation of The Magnifier

- The Magnifier.EXE* - The Magnifier executable

- MagnifierXP.EXE* - The Magnifier alternate executable for Vista (Vista only)

- MAGLIB.DLL* - The Magnifier Dynamic Link Library

- IMGVERS.DLL* - IMG Dynamic Link Library

- HELP*.html, HELP\IMAGES*.png - The Magnifier Help

- MAGNIFY.INI* - The Magnifier Initialization File
- MAGNIFY.ORG - Original The Magnifier Initialization File
- LICENSE.EXE* - IMG License Manager
- LICENSE2.EXE* - IMG License verification only (read-only access)
- LICENSE.LIC* - IMG License File
- LICENSE.ORG - Original IMG License File
- LICENSE.TXT - IMG End User License Agreement
- README.TXT - Product Installation text file
- MANIFEST.TXT - Reference File from Build
- IMGUTIL.EXE - used for installation and uninstallation of software
- UNZIP32S.DLL - Dynamic Link Library for installation and updates

- uninstall.exe - Used for un-installation link (MSI Installs)
- MANAGER\ESTABLISH.EXE - this is a post installation utility that establishes or updates the IMG Download Manager and IMG License Manager files as outlined below.

Located in \Program Files\Common Files\Innovation Management Group\Download Manager directory:

- IMGCLEAN.EXE - used to complete uninstall of software, required for Control Panel Add/Remove Programs
- IMGDLM.EXE - The IMG Download Manager - Installed by MANAGER\ESTABLISH.EXE
- IMGNET.DLL - The IMG Download Manager Library - Installed by MANAGER\ESTABLISH.EXE

Located in \Program Files\Common Files\Innovation Management Group\License Manager directory:

- LICENSE.DLL - library used by the IMG License Manager and IMG Download Manager

Installation Information

CD/DVD may contain:

SETUP.EXE - Installation Assistant to determine platform / install files

AUTORUN.INF - AutoRun for AutoPlay
CD/DVD

RELEASE.TXT - Release information

Located on the The Magnifier Distribution media:

Compressed Files of the The Magnifier Installation Files and:

README.TXT - For the Experienced User

LICENSE.TXT - The Magnifier License Agreement

SETUP.EXE - Setup Utility to Install The Magnifier onto your Hard Drive

The IMG installer can support these options:

/? Displays a message box with info about options

/Q (Quiet install) runs a quiet install (no dialogs/user interaction)

/I (Install) runs a quiet install (no dialogs/user interaction)

/U runs a quiet un-install (no dialogs/user interaction)

/Q and */I* are handled the same (customer requested */Q*)

The following information is for those users

who are curious and want to know, or wish to Uninstall The Magnifier & do not have the original distribution media.

There are 2 approaches to Setup, an IMG installer and the Windows Installer (MSI). The reason 2 installers are available is for flexibility and support purposes. Installing any product is a relatively easy process, but can become complicated as more & more features and capabilities are included. In any complicated sequential process, it is inevitable that some sequence or step is not handled properly. By using a second approach, a verifiable comparison based mechanism is created where a definitive end-result of files & settings can be attained, ensuring the integrity of the installation steps.

Post Installation information:

IMGUTIL.EXE performs various post installation tasks. For reference, if the

installation media has LICENSE.LIC in the same folder as SETUP.EXE, or in the \LICENSE folder, IMGUTIL will copy this into the installation folder (this is useful for evaluation and other types of licensing). If the installation media has a DK?????.ZIP file in the same folder as SETUP.EXE, or in the \DEVKIT folder, it will be copied to the installation folder.

For reference information, you can refer to the INSTALL.XML used by the IMG SETUP.EXE for all post installation operations. In Windows Installer (MSI) installs, these same actions occur.

SETUP.EXE will sense if The Magnifier is Installed or not. If The Magnifier is not installed, then Install must be checked to Install the The Magnifier software. If The Magnifier is already installed, you may Un-Install by selecting the Un-Install option and selecting

OK throughout the following screens.

The Magnifier Initialization File Documentation (MAGNIFY.INI)

Listed below are settings and information for specific applications that require special actions by The Magnifier, along with the Configuration settings for The Magnifier. The Brackets [] denote the area in the MAGNIFY.INI file corresponding to the instance of The Magnifier. Internally the count starts at 0, so the first instance uses the [Settings], the second [Settings1], etc.

Note: The default setting of DoNotUseRegistry=0 means The Magnifier will check the registry for the existence of the settings. If they are there, then the registry settings are used for the current user (e.g.

HKEY_CURRENT_USER \Software \Innovation Management Group \The Magnifier). If the registry settings do not exist, then the settings from MAGNIFY.INI are used as defaults, and when the user closes The Magnifier, the settings are saved to the registry. When the setting DoNotUseRegistry=1 is in use, then all settings will be saved in the MAGNIFY.INI file (location based on the ConfigPath setting). When multiple magnifiers are in use (window mode), the sections are [Settings], [Settings1], [Settings2], etc.

IMPORTANT NOTE: The

DoNotUseRegistry and ConfigPath settings are always initially read from the MAGNIFY.INI in the installation folder (location of The Magnifier.exe). Only if DoNotUseRegistry=1 will the ConfigPath be evaluated to determine where to read the user's settings from.

Note: For USB licensing, the settings are ConfigPath=0, and DoNotUseRegistry=1. This uses the location on the USB device, and not the registry (so settings are carried from system to system on the USB device).

All Settings are the default Settings of The Magnifier.

[Settings]

The following are the default settings for The Magnifier at Install.

ConfigPath=1

This setting determines where the MAGNIFY.INI file will be located.

ConfigPath=0 means the MAGNIFY.INI will be in the installation folder - there are no per user configuration files with this setting and user permissions must allow read-write access to MAGNIFY.INI, or users must run with a fixed (read-only) configuration. When ConfigPath=1 or ConfigPath=2, each user will have their own configuration files. If ConfigPath=3, these are in shared among all users in a public location (this is the preferred setting if global settings for all users is desired).

Note: When DoNotUseRegistry=0 (default), the ConfigPath setting is not

used.

Note that the MAGNIFY.INI file in the installation folder determines the location of new users' configuration files, and if an administrator changes this after The Magnifier has already been used by other users, their existing individual configuration files will NOT be transferred to the new location. What will happen is the software will be unable to find configuration files for the current user in the current specified path, and a copy of the current configuration files will be used as a starting point for this new location.

This is a breakdown by Operating System of the specific locations used - [User] indicates the actual user logged onto the system, and [ProductDir] indicates the Product's directory name, e.g. The Magnifier folder.

ConfigPath Locations

ConfigPath: 0

Windows 2000/XP: \Program Files
\[ProductDir]

Windows Vista: \Program Files
\[ProductDir]

ConfigPath: 1

Windows 2000/XP: C:\Documents and
Settings \[User] \Application Data \Innovation
Management Group \[ProductDir]

Windows Vista: C:\Users \[User] \AppData
\Roaming \Innovation Management Group
\[ProductDir]

ConfigPath: 2

Windows 2000/XP: C:\Documents and
Settings \[User] \Local Settings \Application
Data \Innovation Management Group
\[ProductDir]

Windows Vista: C:\Users \[User] \AppData
\Local \Innovation Management Group
\[ProductDir]

ConfigPath: 3

Windows 2000/XP: C:\Documents and
Settings \All Users \Application Data
\Innovation Management Group \[ProductDir]

Windows Vista: C:\ProgramData
\Innovation Management Group \[ProductDir]

DoNotUseRegistry=0

If DoNotUseRegistry=0, then the registry is used for each user (HKEY_CURRENT_USER). The location is at [HKEY_CURRENT_USER \Software \Innovation Management Group \The Magnifier \Settings]. If DoNotUseRegistry=1, then the INI file is used (as specified by the ConfigPath setting).

TopMost=1

Window is Always on Top if TopMost=1 The Magnifier is a normal sizable popup window if TopMost=0

ForceTopmost=1

ForceTopmost is not available from The Magnifier menu. The default is 1. If ForceTopmost=1 then The Magnifier will reposition itself above every other Window every 50 milliseconds. In 1.50, this was re-worked to sort windows in a sensible manner. Using AutoPosition=1 may be helpful if you set ForceTopmost=1.

AutoPosition=0

If AutoPosition=1 then The Magnifier will automatically reposition to the next logical screen corner when the mouse cursor is held over The Magnifier window for several seconds. AutoPosition=0 disables this action. Screen positions: Top-Left, Top-Right,

Bottom-Left, Bottom-Right

ShowCursor=1

If ShowCursor=1 then a cursor image will be displayed over the magnified screen area within The Magnifier window. ShowCursor=0 disables the cursor image, and The Magnifier only displays the screen area.

OpenPositionX=0

OpenPositionY=0

OpenPositionX and OpenPositionY indicate where on screen The Magnifier should Open - X & Y indicate Top Left Corner. Default is center of screen. 0 indicates use default. Therefore, the window cannot open at position 0,0 - use -1,-1 or 1,1

OpenWidth=0

OpenHeight=0

OpenWidth and OpenHeight indicate size of window. Default window is based on the current screen resolution. 0 indicates use default. Do not use values below 10.

TimerInterval=50

The TimerInterval setting is used to set the number of milliseconds between each Magnifier update. This can affect the system performance and should be set as slow as possible while still being useful to the user. Higher values indicate slower updates. A setting of 1000 means The Magnifier updates once every second.

MagnifierMenu=0

This indicates which menu is used. If MagnifierMenu=1 then the large button / large font Magnifier Menu is used. If MagnifierMenu=0 then the windows menu's are used, and the display settings are controlled

via the Display Properties | Appearance options.

MagnificationFactor=2

This is the Magnification factor that is used within the Magnifier window to magnify from the center of either the current cursor position or the locked screen position. Valid values are 2 through 10.

AllowDrag=1

This is used to track whether the Left Click & Drag is active. If AllowDrag=1 then a Left Double Click will open the menu. If AllowDrag=0 then the drag is not available, and a single Left Click will open the menu.

LockPosition=0

If LockPosition=1 then the Magnifier no longer track the mouse cursor position, but magnifies the screen position indicated by the LockPos

settings below.

LockPosX=457

LockPosY=180

These indicate the screen position X and Y that is magnified when the Magnifier is Locked on a position.

TrackCursor=0

This indicates whether the Magnifier is tracking the mouse cursor or not. If TrackCursor=1 then the Magnifier moves along with the mouse cursor, repositioning automatically as needed.

TrackPosX=101

TrackPosY=225

These are used internally for the Track Cursor Option. They should not be modified.

ShowLines=0

This setting indicates whether the Cursor Position Indicator Lines are shown. If ShowLines=1 then these 4 lines point towards the current position of the mouse cursor.

AnimateLines=1

This setting only applies if ShowLines=1. If AnimateLines=1 then the Cursor Position Indicator Lines will animate. This may assist finding the lines.

LineWidth=1

This setting indicates the line width of the Cursor Position Indicator Lines. Valid values are 1, 3, or 5.

NoMagWindow=0

If ShowLines=1, and NoMagWindow=1 then ONLY the cursor lines will be shown without the Magnifier window.

LinesTopmost=1

This is an internal setting, and should remain `LinesTopmost=1` This is used to keep the Cursor Position Indicator lines above other windows so they are always visible.

LayeredPct=255

This is the transparency level for the "Layered" window setting It can range from 1-255, with 255 being opaque (NOT transparent) At lower levels, the windows becomes more & more transparent Internally, if set at 255, transparency is disabled entirely.

FullScreenPrimary=0

If `FullScreenPrimary=1`, then the full screen operation on the primary monitor is enabled. If `FullScreenPrimary=0`, then the Magnifier is operating as a window.

ShowReferenceWindow=1

This only applies when operating in full screen

mode. If `ShowReferenceWindow=1`, then a reference window showing a representation of the area being magnified is shown in the upper right (or toggles to upper left if the mouse moves over the window). The white area is displayed on a black background, where the background represents the entire screen area that can be magnified, and the white area represents the area that is currently being magnified.

FullScreenVirt=0

When `FullScreenVirt=1`, then the entire virtual area (multiple monitors) is used in the full screen magnification mode. This can only be true if the system indicates there is more than 1 monitor available and is in use.

TextCaretTracking=1

When `TextCaretTracking=1`, the `MAGLIB.DLL` enables a windows

accessibility event hook and overrides the mouse cursor as the magnification point, shifting the magnification point to the text caret. When `TextCaretTracking=0`, this tracking is disabled.

`DialogsAndFocus=1`

This is similar in operation to the Text Caret tracking, but it monitors the dialog start and dialog end events, along with keyboard focus events. `DialogsAndFocus=1` means the mouse cursor location is ignored, and the magnification point is moved to the object in focus. If `DialogsAndFocus=0`, then this tracking is disabled. This is partially controlled by the `FocusWaitTime` internally (see below to override this).

`;FocusWaitTime=500`

This entry is an override settings for the lockout period used to prevent conflicts

between the mouse operation and tracking the DialogsAndFocus events. The time is in milliseconds and 500 is the internal default. You may notice this if you start using the keyboard, then use the mouse, and go back to the keyboard - the wait time period must elapse before the keyboard events override the mouse (and the mouse must remain stationary). You may wish to make this time shorter for a more responsive keyboard, but understand that the mouse and keyboard focus events may conflict if this delay is too short.

LensViewMode=0

When LensViewMode=1, (in window mode), a circle region is created so the Magnifier appears as a round lens. This is not available in full screen mode. LensViewMode=0 means the window is a normal, sizable window.

InvertColors=0

`InvertColors=1` means the actual screen display is inverted in the Magnifier display, and `InvertColors=0` means it is normal.

`AltShortcuts=1`

`AltShiftShortcuts=0`

`CtrlShiftShortcuts=0`

Only 1 of these can be set to 1, the others should be at 0. These determine which keystroke combination is required to get at the Magnifier's shortcuts. By default, it is the Alt key, but this can conflict with some applications (e.g. Alt-O will open the option menu, but will also toggle the Follow cursor (track cursor) mode. If this is problematic, set `AltShiftShortcuts=1` to use the Alt-Shift-[Key] combination, or `CtrlShiftShortcuts=1` to use Ctrl-Shift-[Key].

`rgbLines=7346`

This is a decimal representation of the colors used by the cursor lines using the hexadecimal 0x00FFFFFF COLORREF type internally for 0x00BBGRR.

RangeSlider=100

This is used to track the range setting in the Magnification dialog (10x, 20x, 30x, 40x)

MagnVista=20

This records the setting for incremental magnification values, e.g. the real magnification internally is this value divided by 10, i.e. $\text{MagnVista}/10 = \text{Magnification}$.

UseFocusEdge=1

PctFocusEdgeX=8

PctFocusEdgeY=16

If UseFocusEdge=1, then an internal calculation takes place (based on the PctFocusEdgeX and PctFocusEdgeY values)

that take the current position provided by the system for the object in focus (e.g. menu item, icon, dialog control, etc.), and if it is within that percentage of the edge of the screen, then the edge of the screen is used (rather than the actual position). This helps make things visible, especially at higher magnification values.

If `UseFocusEdge=0`, then the actual position is used directly, and the `PctFocusEdge` values mean nothing. The `PctFocusEdgeX` and `PctFocusEdgeY` values are used internally as a percentage calculation for pixels (based on the primary monitor resolution). If the position provided by the system is within the number of pixels calculated of the edge, then the edge is used. The best values depend on the monitor resolution, the magnification factor, and usage. The values chosen were based on experimentation for lower magnification

factors.

UseCaretEdge=1

PctCaretEdgeX=8

PctCaretEdgeY=8

If UseCaretEdge=1, then an internal calculation takes place (based on the PctCaretEdgeX and PctCaretEdgeY values) that take the current position provided by the system for the text caret, and if it is within that percentage of the edge of the screen, then the edge of the screen is used (rather than the actual position). This helps make things visible, especially at higher magnification values.

If UseCaretEdge=0, then the actual position is used directly, and the PctCaretEdge values mean nothing. The PctCaretEdgeX and PctCaretEdgeY values are used internally as a percentage calculation for pixels (based on the

primary monitor resolution). If the position provided by the system is within the number of pixels calculated of the edge, then the edge is used. The best values depend on the monitor resolution, the magnification factor, and usage. The values chosen were based on experimentation for lower magnification factors.

Alternate Magnification In Vista

When running in Windows Vista, Microsoft has a built in magnification interface that is used to magnify the screen display within The Magnifier, to be compatible with the entire operating system. In certain instances (lack of correct video driver, insufficient video display hardware, incorrect display settings, etc.), this

interface will not operate as intended. The Magnifier's window background displays a few statements outlining important Vista information:

- Magnifying magnifier windows is not possible in Windows Vista
- If the text is seen with no magnification display at all, then the magnification interface is not currently operable. It is strongly recommended that you check settings, update drivers, upgrade your hardware, etc. to allow Vista to operate as intended.
- You can use the special keyboard shortcut **Alt-A** to access an Alternate Magnifier.

This outlines what is happening when Alt-A is used within Vista.

- The Vista compatible version of The Magnifier is closed (all instances)
- The Windows XP compatible version is started. (Named MagnifierXP.exe, location in the installation folder).

Notes: If you are forced to use the XP compatible version of The Magnifier in Windows Vista, you will want to select any other Appearance option other than the Windows Aero display (Personalize | Appearance | View Classic options). When operating with the Aero appearance selected, you are not able to view "through" The Magnifier window, and full screen operation is not usable. You may also want to change (or create a new shortcut icon to launch MagnifierXP.exe (rather than the default The Magnifier) Otherwise, anytime you run The Magnifier.exe, you will need to use Alt-A to start the alternate program. The license

remains the same, and the alternate magnifier should be effective if your system cannot use the Vista approach, and you do not run the Aero appearance setting.

Application Notes

Games using DirectX

Publisher: various

Version: many

By design, these "applications" directly access the video hardware, and bypass normal Windows video & screen display approaches. By design, The Magnifier will not work with any non-standard application software that uses these approaches. The Magnifier is designed to

work with normal Windows applications that follow the rules & guidelines offered by Microsoft for operation within the normal Windows environment.

Full Screen Video

Publisher: various

Version: many

In general, similar issues to DirectX (above) also apply to full-screen video, where the display is being drawn to directly, bypassing the application software and preventing the use of The Magnifier. In some cases, the video display may be affected by The Magnifier (especially on Vista/7) (dependent on the capabilities of the video adapter in the system). You may need to hide (**Alt-S**), or close The Magnifier when viewing full-screen video.

Windows Developers

Note: In the 1.50 version, available in the IMG Developer's Kit 1.78 Release 3, there are samples of controlling and communicating with The Magnifier through stand-alone utilities, C/C++, Visual Basic, and C# (.NET). Refer to the link below to gain access to the IMG Developer's Kit.

Developers Notes, downloadable files, sample code, and other useful integration and programming information is available at Innovation Management Group, Inc.'s Web Site:

<http://www.imgpresents.com/imgdev.htm>

Developers wishing more technical information about The Magnifier, messaging information, and details how applications can interface with The Magnifier should contact

Innovation Management Group, Inc.

For Questions or other information you may contact:

Innovation Management Group, Inc.

Customer Service

179 Niblick Road #454

Paso Robles, CA 93446

USA

1-800-889-0987 (US & Canada)

+1-818-701-1579

+1-818-936-0200 (fax)

<cs

[http://www](http://www<imgpresents.com)

About this product

The Magnifier started as a panel on IMG's My-T-Mouse[®], and by user suggestion, was

spun off as a stand-alone product in 1997. An initial round of suggestions and updates resulted in the 1.20 release in 1998. Over the years, The Magnifier continued to be in demand, but there were always questions if The Magnifier could provide full-screen magnification. When Windows Vista was released, Microsoft added a new magnification API (Application Programming (Programmer's) Interface), and it was decided that a much overdue update was necessary. Using new tools and capabilities within Windows, The Magnifier was updated utilizing all available options, and full screen magnification became possible, without having to resort to complicated driver interfaces. This design and approach results in a very cost effective implementation that is of great benefit to the majority users that have some need for a magnification utility.

Customer Suggestions

We appreciate and welcome suggestions from our users for features that you would like to see in future versions of The Magnifier. Please feel free to send us any comments you may have that would make our product more useful to you. All suggestions and ideas become the property of Innovation Management Group, Inc.

Send to:

Innovation Management Group, Inc.
Customer Service
179 Niblick Road #454
Paso Robles, CA 93446
USA

Or contact us directly:

1-800-889-0987 (US & Canada)

Chapter 7. Advanced User Notes

+1-818-701-1579

+1-818-936-0200 (fax)

<cs@imgpresents.com>

<http://www.imgpresents.com>

Date: _____

Name: _____

Address: _____

City: _____

State: _____ Zip: _____

The Magnifier Comments and Suggestions:

Version 1.50 Release 5

9/17/2012

Copyright © 1997-2012 by Innovation
Management Group, Inc.

All Rights Reserved.

My-T-Mouse[®], My-T-Pen[®], My-T-Touch[®] and
My-T-Soft[®] are registered trademarks of
Innovation Management Group, Inc.

Index

Symbols

2x Full Screen
Operation,
135

A

About, 130,
160
About this
product, 219
Add/Remove
Programs, 4,
22

Advanced
Menu, 119,
148

Advanced
User Notes,
180

AllowDrag -
INI setting,
202

Alt Keys -
Shortcut
Keys, 62

Alt-,(comma)
- decrease
magnification,
70

Alt--(_) -
decrease
magnification,
70

Alt-(period) - increase magnification, 70	70 Alt-7 - 7X magnification, 70
Alt-1 - 1X magnification, 70	Alt-8 - 8X magnification, 70
Alt-2 - 2X magnification, 70	Alt-9 - 9X magnification, 70
Alt-3 - 3X magnification, 70	Alt=(+) - increase magnification, 70
Alt-4 - 4X magnification, 70	Alt-A - alternate magnifier, 70
Alt-5 - 5X magnification, 70	Alt-C - Show / Hide
Alt-6 - 6X magnification,	Magnified Cursor, 70

- Alt-D - Return to default size, 70
- Alt-Delete - Move Window Left, 73
- Alt-Down Arrow - Move Cursor Down, 74
- Alt-End - Move Window Right, 73
- Alt-G - Presentation Mode, 70
- Alt-Home - Move Window Left, 73
- Alt-I - Invert Colors, 70
- Alt-J - Toggle Text tracking, 70, 126, 154
- Alt-K - Show list of Keyboard Shortcuts, 70
- Alt-L - Lock Magnified Position, 70
- Alt-Left Arrow - Move Cursor Left, 74
- Alt-M - Show Magnified dialog, 70

Alt-N - Show
/ Hide Cursor
Lines, 70
Alt-O -
Follows
cursor toggle,
70
Alt-PgDn -
Move
Window
Down, 73
Alt-PgUp -
Move
Window Up,
73
Alt-Q - Close
The
Magnifier, 70
Alt-R - Lens
View Mode
toggle, 70

Alt-Right
Arrow - Move
Cursor Right,
74
Alt-S - Show /
Hide window,
70
Alt-T - Show
Transparency
dialog, 70
Alt-Up Arrow
- Move Cursor
Up, 74
Alt-V - Full
display
(Virtual
display), 70
Alt-Z - Full
Screen
(Zoom)
toggle, 70

Alternate
Magnification
(Vista), 213
AltShiftShortcuts
- INI setting,
209
AltShortcuts -
INI setting,
209
Always
Topmost
Window, 124
Animate
(Cursor
Lines), 118,
147
AnimateLines
- INI setting,
204
Application
Notes, 216

Arrow Keys,
73
AutoPosition -
INI setting,
199

B

Basic
Operation
Notes -
Common
Configura-
tions,
53

C

Catalog, 45

CD

(CD-ROM or
DVD), 1, 18

Certificate of
Authenticity,
1, 18

Check for
Updates, 131,
161

Circle (Lens
View), 123

Close (All/All
Other), 128,
155

Color (Cursor
Lines), 118,
147

Color

Inversion -

Common

Configura-
tions,
88

Common

Configura-
tions, 53, 131,
161

Commonly
Asked

Questions, 38

Complete List
of Shortcut

Keys, 62

ConfigPath -
INI setting,
195

Contacting

IMG, 218

- Copyrights, 9
- Ctrl-Down
 - Arrow - Move
 - Magnification point Down, 75
- Ctrl-Left
 - Arrow - Move
 - Magnification point Left, 75
- Ctrl-Right
 - Arrow - Move
 - Magnification point Right, 75
- Ctrl-Up
 - Arrow - Move
 - Magnification point Up, 75
- CtrlShiftShortcuts
 - INI setting, 209
- Cursor
- Display, 116, 144
- Cursor Lines, 117, 146
- Cursor Lines Color, 118, 147
- Cursor Options, 115, 144
- Custom Magnification Setting, 101, 141
- Customer Service, 43
- Customer Suggestions, 221

Customer
Support, 42

D

Defaults
(return to) -
Common
Configura-
tions,
89
Developers,
218
Dialogs
tracking, 126,
153
DialogsAndFocus
- INI setting,
207
Display, 38

Display
Cursor, 116,
144
DoNotUseRegist
- INI setting,
198
Down Arrow -
Move bottom
border down,
76
Dragging, 125
Drivers, 41
DVD
(CD-ROM or
DVD), 1, 18

E

equipment, 17
231

Evaluation
License, 31
Exit (No
Save), 128,
155
Exit (Saving),
132, 162
Exit
Windows,
129, 156

Features, 15
File Notes,
184
Files -
Product Files
Installed, 184

Final Release
Notes, 182
Focus
(keyboard)
tracking, 126,
153
FocusWaitTime
- INI setting,
207
Follows
Cursor, 103
ForceTopmost
- INI setting,
199
Full Screen,
102, 142
Full Screen
Operation,
133
Full Screen
Operation -

Common
Configurations,
86
Full Screen
Options, 121,
150
FullScreenPrimary
- INI setting,
205
FullScreenVirt
- INI setting,
206

G

Guide
(Using), 9

H

hard disk
space, 17
hardware
requirements,
17
Help
Contents, 130,
160
Hot-keys,
128, 155

I

IMG, 24, 26
Important
User
Information,
10

incompatibilities,

183

INI - File

Documenta-
tion

(MAG-
NIFY.INI),

192

Initialization

File Docu-
mentation

(MAG-
NIFY.INI),

192

Innovation

Management

Group, Inc.,

43

input device,

183

Install

Installing,

4, 21

Installing /

Un-

Installing,

18

Install -

Silent, 188

Installation

Information,

188

Invert Colors,

106, 143

InvertColors -

INI setting,

208

K

Keyboard

Focus, 78
Keyboard
focus
tracking, 126,
153
Keyboard
Shortcut List,
130, 161
Keyboard
Shortcuts,
128, 155
Keyboard
tracking, 126,
153
Keys -
Shortcuts - by
Function, 81
Keys -
Shortcuts -
Common
Configura-

L

tions,
62
LayeredPct -
INI setting,
205
Left Arrow -
Move left
border left, 76
Left Click &
Drag, 125
Lens View
Mode, 123
LensViewMode
- INI setting,
208
License Key,
1, 18, 26

License
Manager, 26
Licensing, 26
Licensing
Information,
24
Lines (cursor)
Color, 118,
147
LinesTopmost
- INI setting,
204
LineWidth -
INI setting,
204
List of
Shortcut
Keys, 62
LockPosition
- INI setting,
202

M

LockPosX -
INI setting,
203
LockPosY -
INI setting,
203
Magnification,
96, 137
MagnificationFa
- INI setting,
202
Magnifier
Menu, 120,
149
Magnifier
Menu -

- Advanced
 - Menu, 175
 - Magnifier
 - Menu - Cursor Options
 - Menu, 173
 - Magnifier
 - Menu - Full Screen Options
 - Menu, 176
 - Magnifier
 - Menu - Help
 - Menu, 177
 - Magnifier
 - Menu - Magnification
 - Menu, 169
 - Magnifier
 - Menu - Main
 - Menu, 166
 - Magnifier
 - Menu - Position
 - Menu, 170
 - Magnifier
 - Menu - Set Position
 - Menu, 172
 - Magnifier
 - Over Menus, 125
 - Magnifier
 - Window show / hide, 117, 147
 - MagnifierMenu
 - INI setting, 201
 - MAGNIFY.INI
 - File Documentation, 237

192

MagnVista -
INI setting,
210
messaging
information,
218
Monitor,
primary (Full
Screen), 157
Monitors,
multiple (Full
Screen), 157
Mouse
Operations, 68
Moving, 125
Multiple
Monitors (Full
Screen), 158

N

NoMagWindow
- INI setting,
204

O

OpenHeight -
INI setting,
200
OpenPositionX
- INI setting,
200
OpenPositionY
- INI setting,
200
OpenWidth -
INI setting,
200

P

PctCaretEdgeX

- INI setting,

212

PctCaretEdgeY

- INI setting,

212

PctFocusEdgeX

- INI setting,

210

PctFocusEdgeY

- INI setting,

210

Position

Menu, 107

Presentation

Mode, 124,

152

Primary

Monitor (Full

Screen), 157

Product

Catalog, 45

Programming

Information,

218

Q

Questions

Commonly

Asked

Questions,

38

Quick Start, 1

R

RangeSlider -
INI setting,
210

Reboot

Windows,
129, 156

Reference

Window (Full
Screen), 157

Release

Information,
4, 21, 188

Release

Notes, 182
requirements,
17

Restart

Windows,
129, 156

rgbLines - INI
setting, 209

Right Arrow -
Move right
border right,
76

Round (Lens
View), 123

S

Serial

Number, 1,
18, 26

Set Position
Menu, 110

Settings
section

[Settings] (INI
file), 194

Setup, 4

 Installation

 Options,

 188

 Product

 Installation,

 188

 Quiet

 Install, 188

Shift-Down

 Arrow - Move

 top border

 down, 77

Shift-Left

 Arrow - Move

 right border

 left, 77

Shift-Right

 Arrow - Move

 left border

 right, 77

Shift-Up

 Arrow - Move

 bottom border

 up, 77

Short-Cut, 15

Shortcut Keys

- by

 Functions, 81

 Shortcut Keys

 - Common

 Configura-

 tions,

 62

 Shortcuts

 (keyboard),

 128, 155

 Show Cursor,

 116, 144

 Show

 Magnifier

 Window, 117,

 241

147
Show
Reference
Window (Full
Screen), 157
ShowCursor -
INI setting,
200
ShowLines -
INI setting,
203
ShowReferenceWindow
- INI setting,
205
Split Screen -
Bottom, 114
Split Screen -
Right, 113
standard
configuration,
37

Standard
Menu, 120,
149
standard
settings, 37
Suggestions,
221
Support
 Customer
 Support, 42
 website, 42
System
requirements,
17

T

Technical
Documenta-
242

- tion Section, 201
- 180
- Technical Notes, 184
- Text Caret tracking, 125, 153
- TextCaretTracking
 - INI setting, 206
- The Magnifier
 - Starts with Windows - Common Configurations, 92
- The Magnifier Toolbar, 57
- TimerInterval
 - INI setting, 203
- Toolbar, 57
- TopMost - INI setting, 198
- Topmost Window, 124
- Track Dialogs & Keyboard, 126, 153
- Track Text Caret, 125, 153
- TrackCursor - INI setting, 203
- TrackPosX - INI setting, 203
- TrackPosY - INI setting, 203

Tracks
(follows)
Mouse Cursor
- Common
Configura-
tions,
91
Tracks Cursor,
103
Trademarks, 8
Transparency,
122, 151
Typing
(magnifying),
125, 153

Up Arrow -
Move top
border up, 76
Updates
(check for),
131, 161
Use Magnifier
Toolbar, 120,
149
UseCaretEdge
- INI setting,
212
UseFocusEdge
- INI setting,
210
User Notes,
183
Using this
guide, 9

Un-Install, 22

U

V

Version
(history), 182
Video -
Drivers, 41
view the
cursor, 39
Virtual
Desktop (Full
Screen), 157
Vista -
Alternate
Magnification,
77, 213

W

website, 42

What is The
Magnifier, 11
What You
Need, 17
Why Do I
Need The
Magnifier?, 14
Width (Cursor
Lines), 118,
147
Window
(Magnifier)
show / hide,
117, 147
Windowed
Operation, 95
Windows
Applications,
38
Windows
Developers,
245

218